

東大－野村 大学経営ディスカッションペーパー

No. 11

東京大学基金を支える寄付者の方々に聞く

東京大学基金への寄付に関するアンケート(個人編)から

2009年7月

劉 文君¹⁾

片山 英治²⁾

小林 雅之³⁾

服部 英明⁴⁾

本ペーパーは、国立大学法人東京大学と野村證券株式会社による共同研究「わが国大学の財務基盤強化に関する共同研究」の一環として発刊するものである。

1) 東京大学大学総合研究センター特任研究員

2) 東京大学大学総合研究センター共同研究員 / 野村證券法人企画部主任研究員

3) 東京大学大学総合研究センター教授

4) 野村證券公益法人財務戦略部課長

Nb. 06

2007 11

Nb. 02

Nb. 07

2009 7

.....

.....

.....

.....

.....

.....

.....

.....

.....

.....

..... 10

..... 11

..... 11

..... 13

..... 13

..... 15

..... 15

..... 17

..... 18

..... 19

..... 19

..... 20

..... 22

..... 22

..... 23

..... 23

..... 25

..... 26

..... 28

..... 28

..... 29

..... 30

..... 33

..... 35

..... 37

..... 38

..... 38

..... 39

..... 40

..... 41

..... 41

..... 43

..... 44

..... 46

..... 46

..... 46

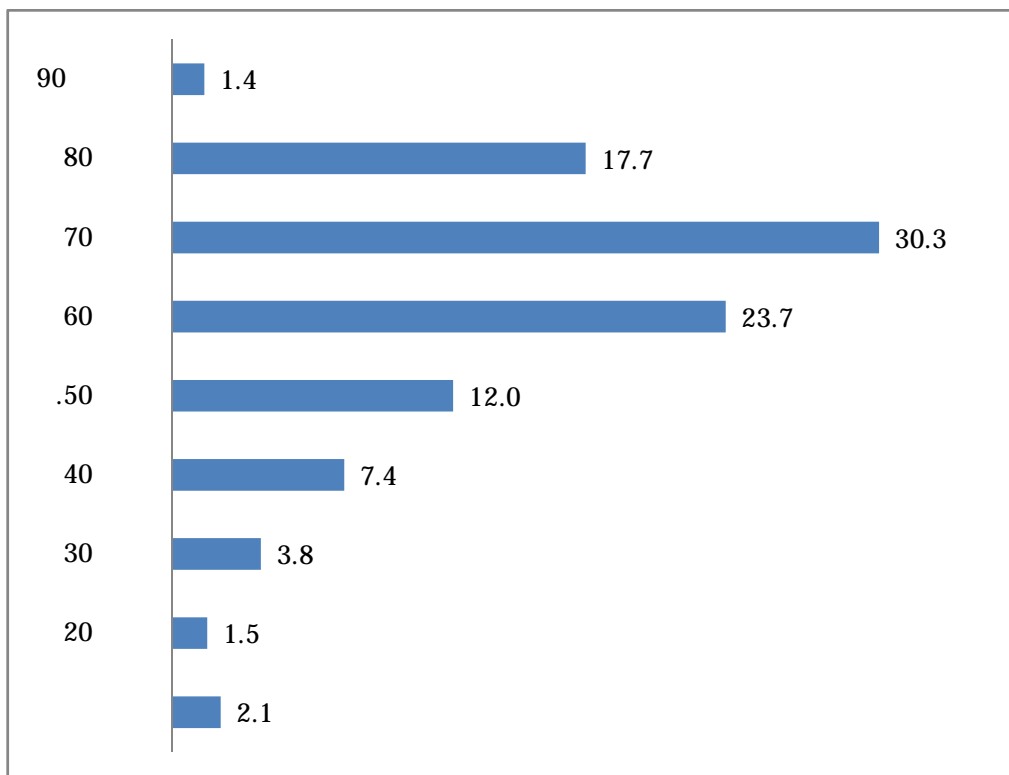
..... 46

..... 47

..... 47

..... 48

0 1



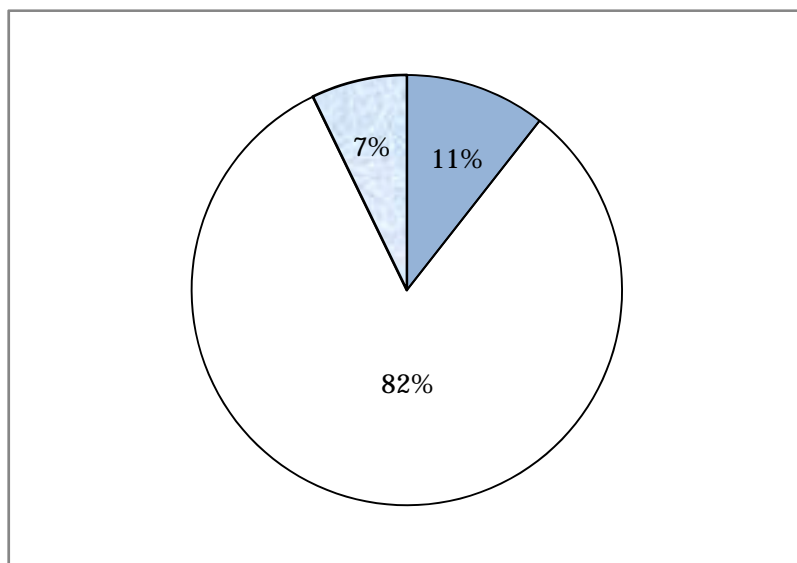
1569

0 2

82%

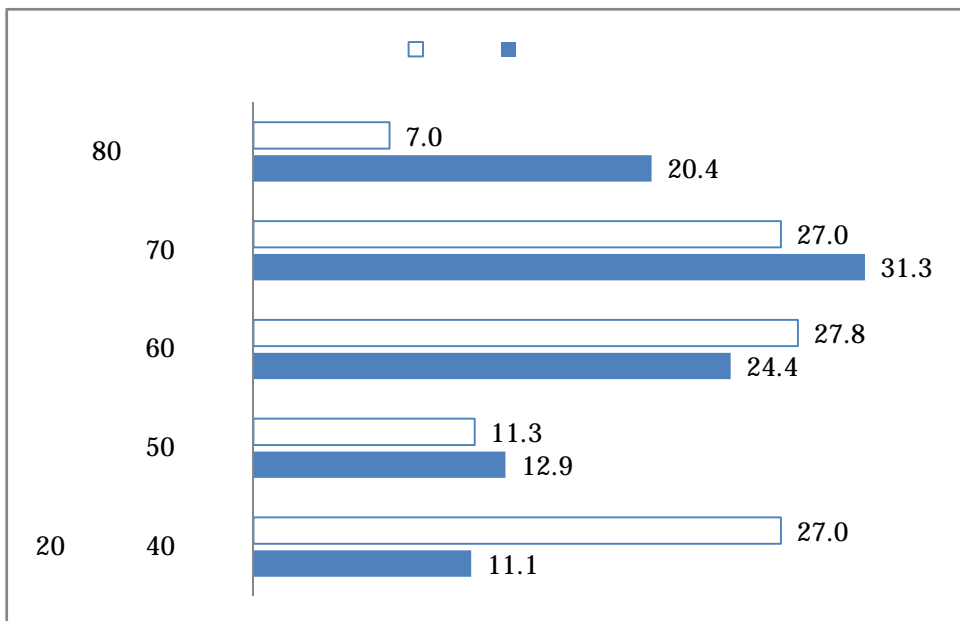
1 7%

0 2



1569

0 3



N= 1427

20~40

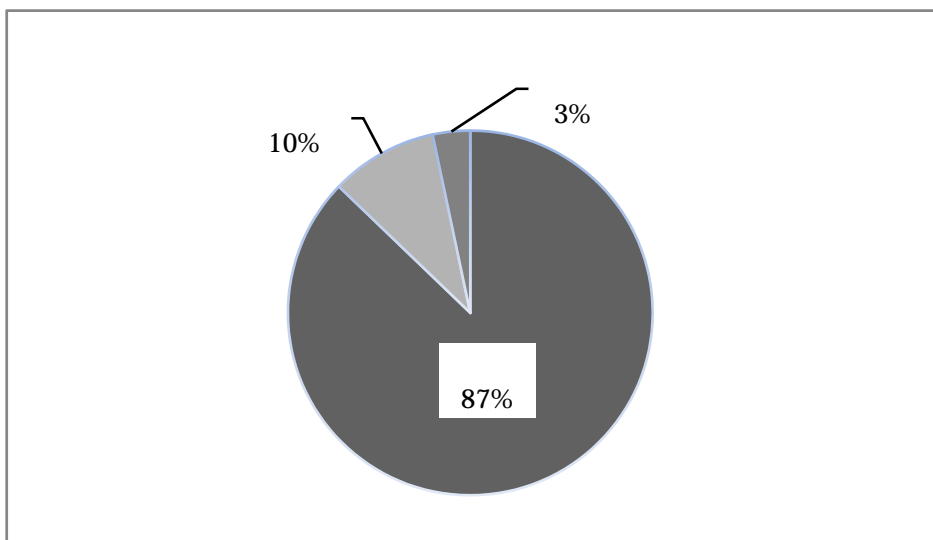
80

0-3

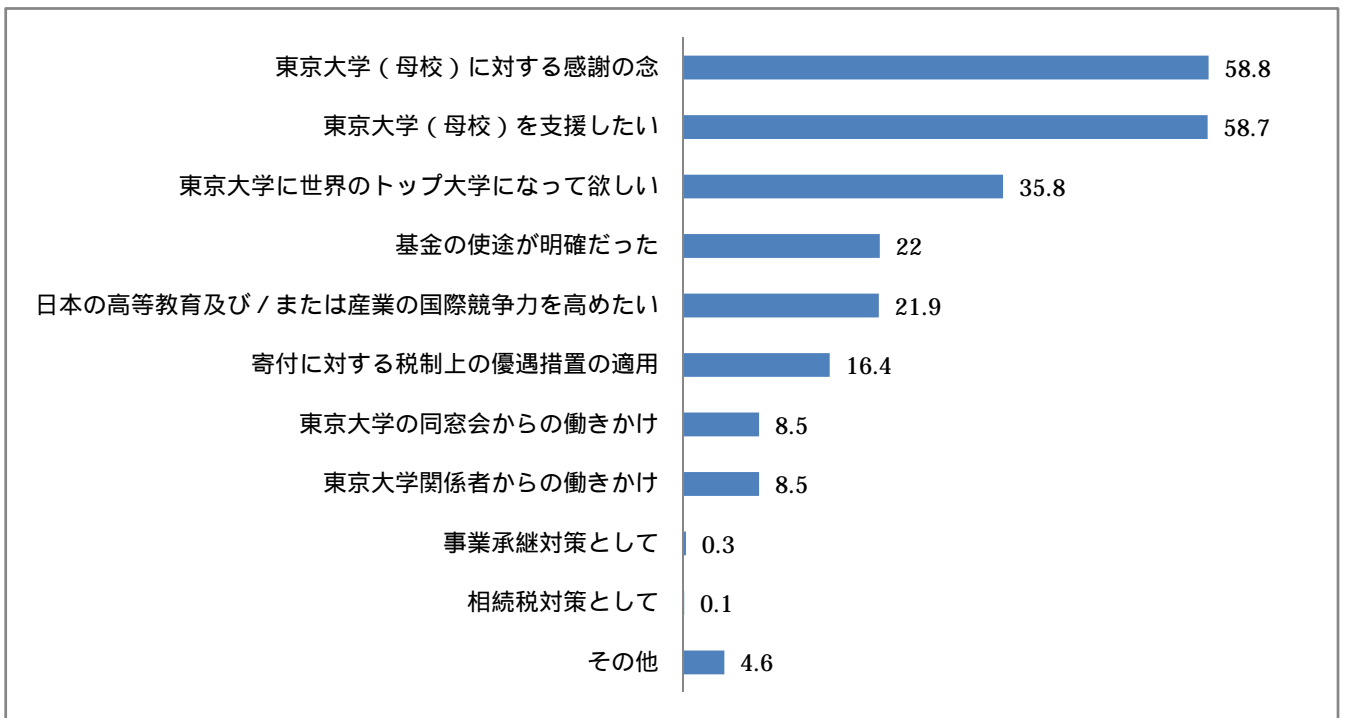
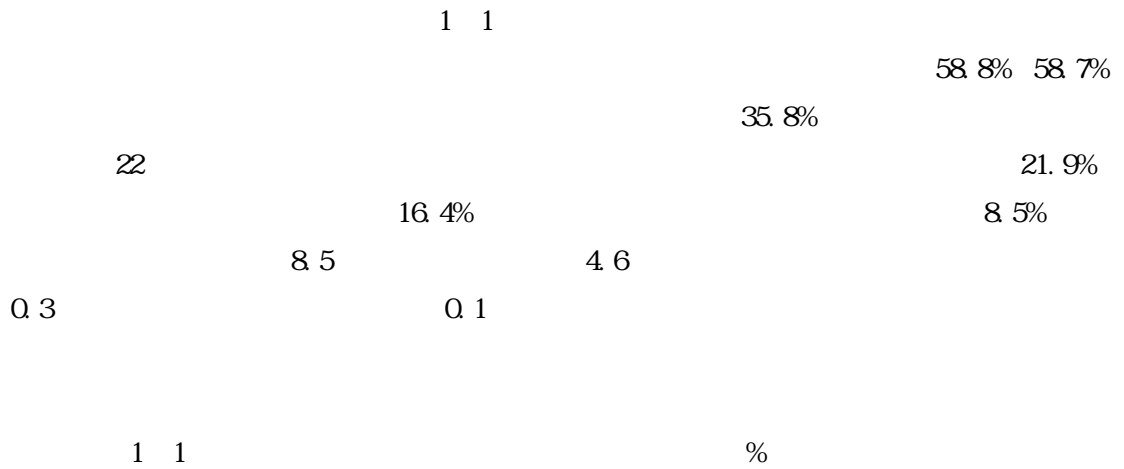
0 4 87%

10%

0 4



N 1569

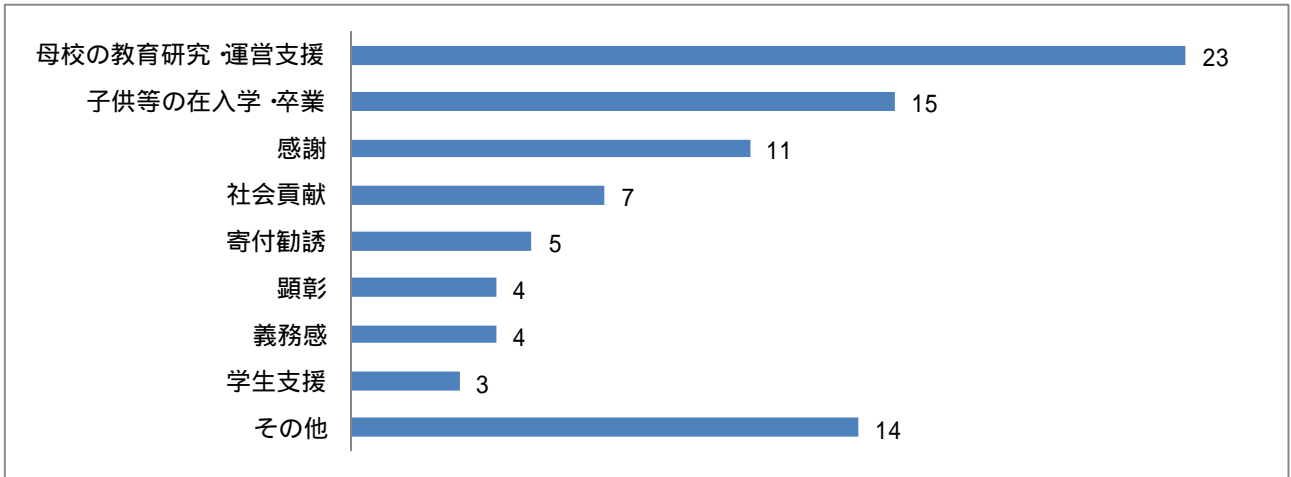


1569

1 2

(

1 2



N=86

15

...

11

5

130

150

4

4

...
3

14

1 3

1 1

16.4%

60

19.6%

70

18.3%

20

40

14

80

13.7

50

12.2

80

65.7

80

61.0

60

58.6

20

40

56.5

50

44.4

70

80

50

20

40

65.5

60

62.1

70

58.7

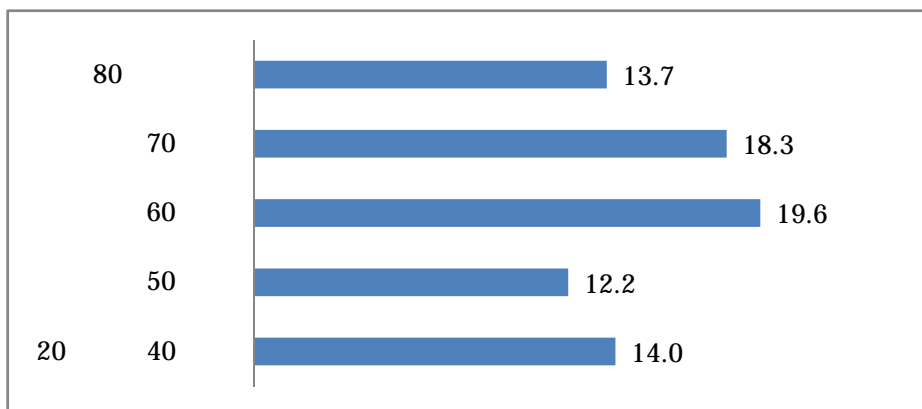
50

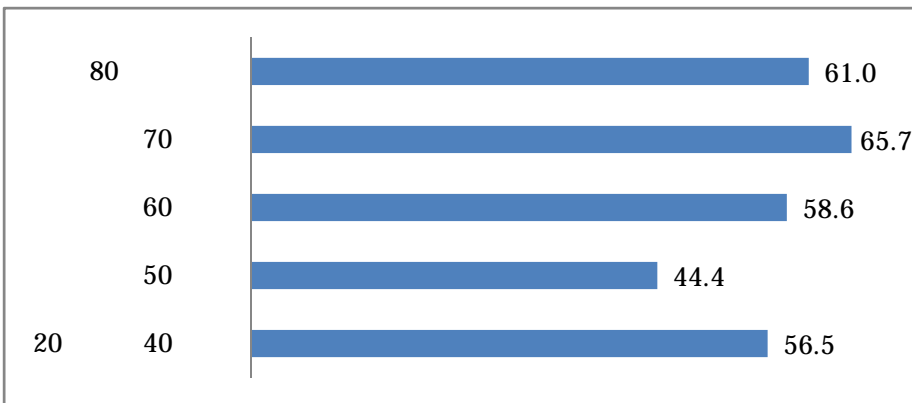
54.5

80

54.0

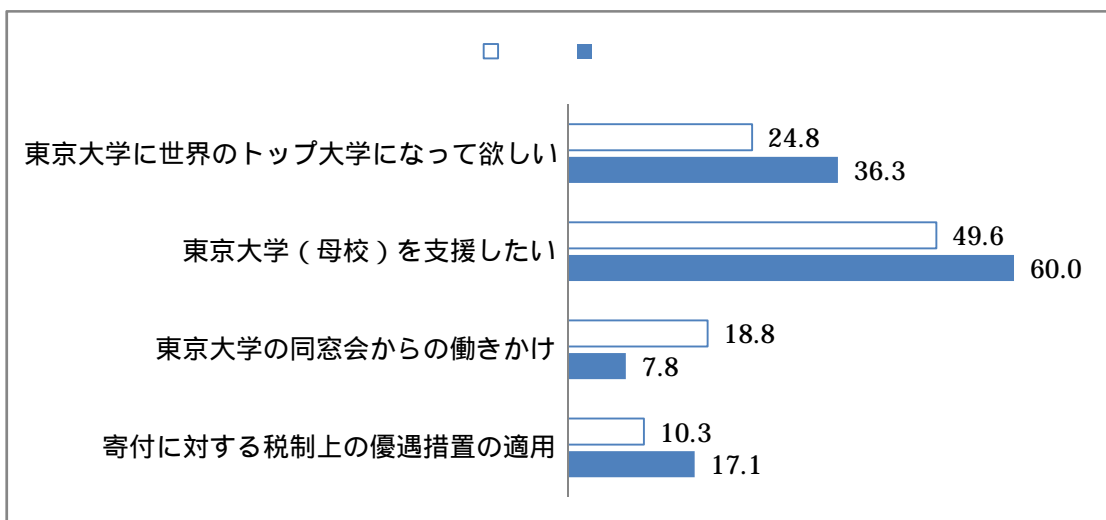
1 3





N=1536

1 4



1435

1 3

49.6 60% 24.8% 36.3% 10.3 17.1

7.8 18.8

1 5

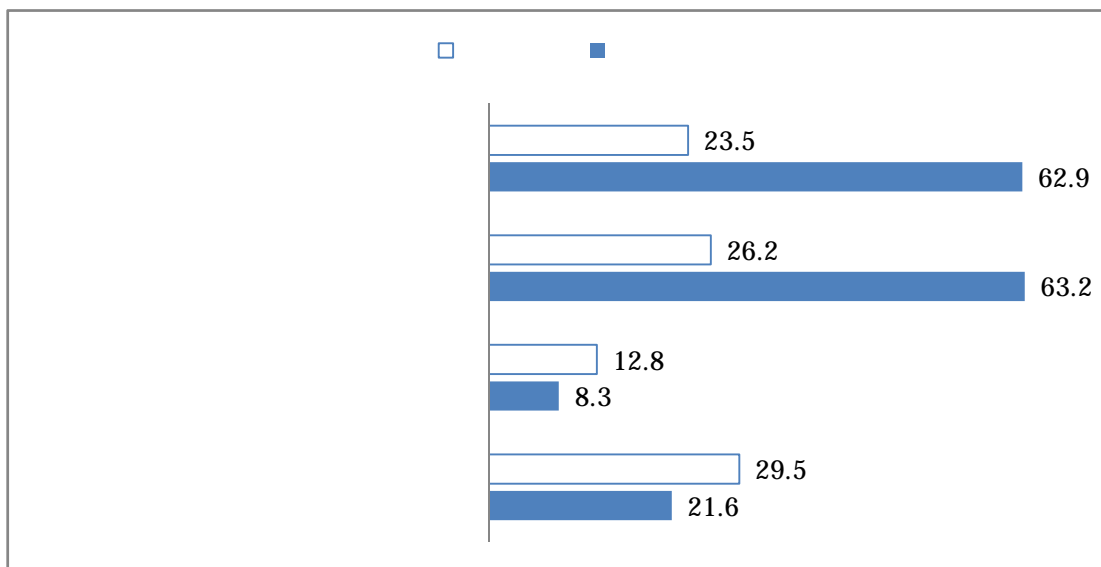
63.2% 62.9% 26.2% 23.5%

8.3%

29.5% 12.8%

21.6%

1 5



1517

1 6

24.0% 10.29 18.9% 100 17.5% 5.9 30.99 14.3

5 9.0 100

72.5 30.99 62.8 10.29 58.4% 5.9

100

58.0 5 55.4

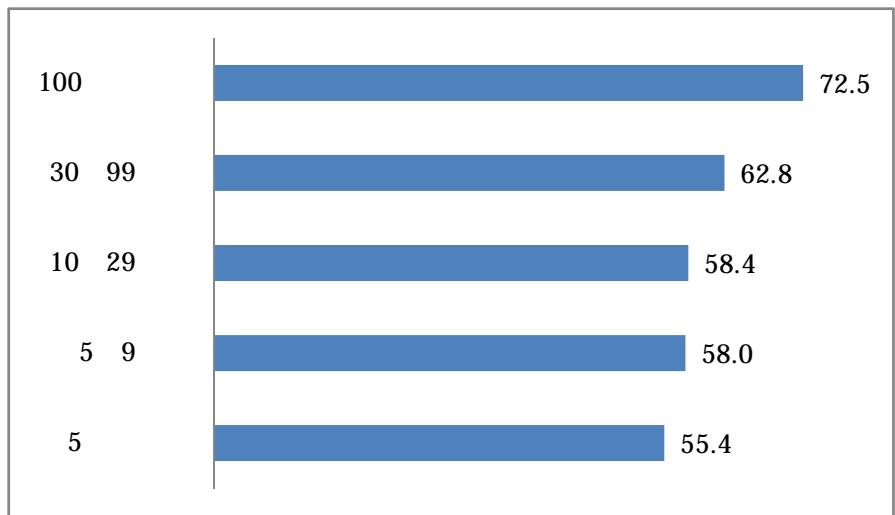
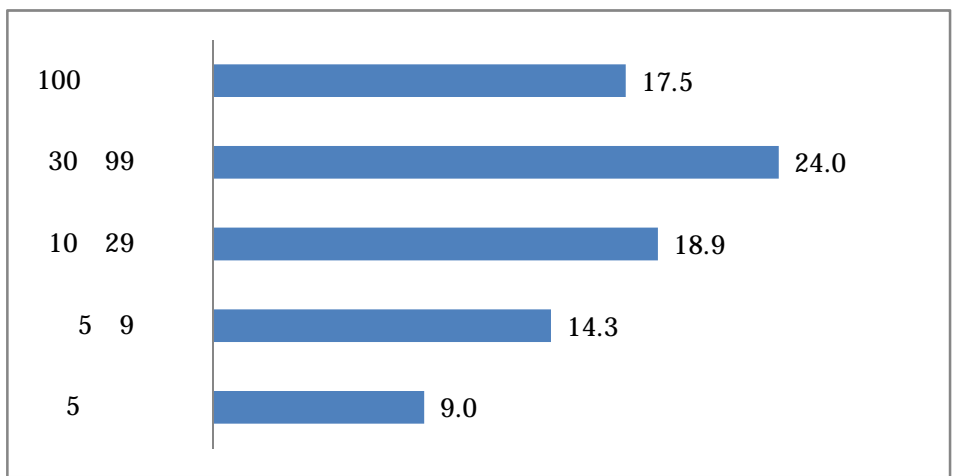
30 99 43.2 100 40

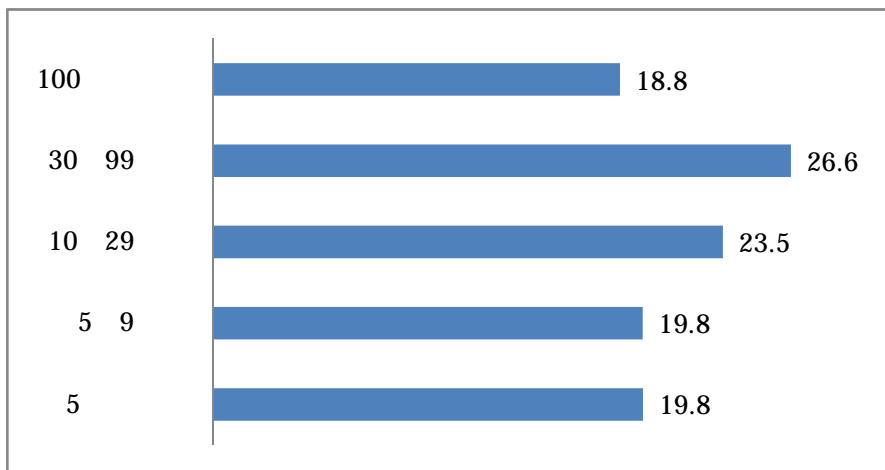
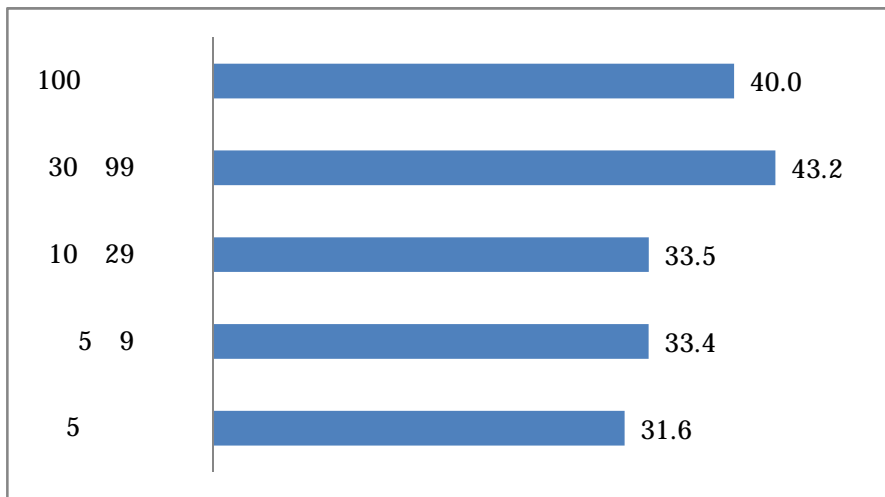
10 29 33.5% 5 9 33.4 5

31.6

30 99 10 29

1 6





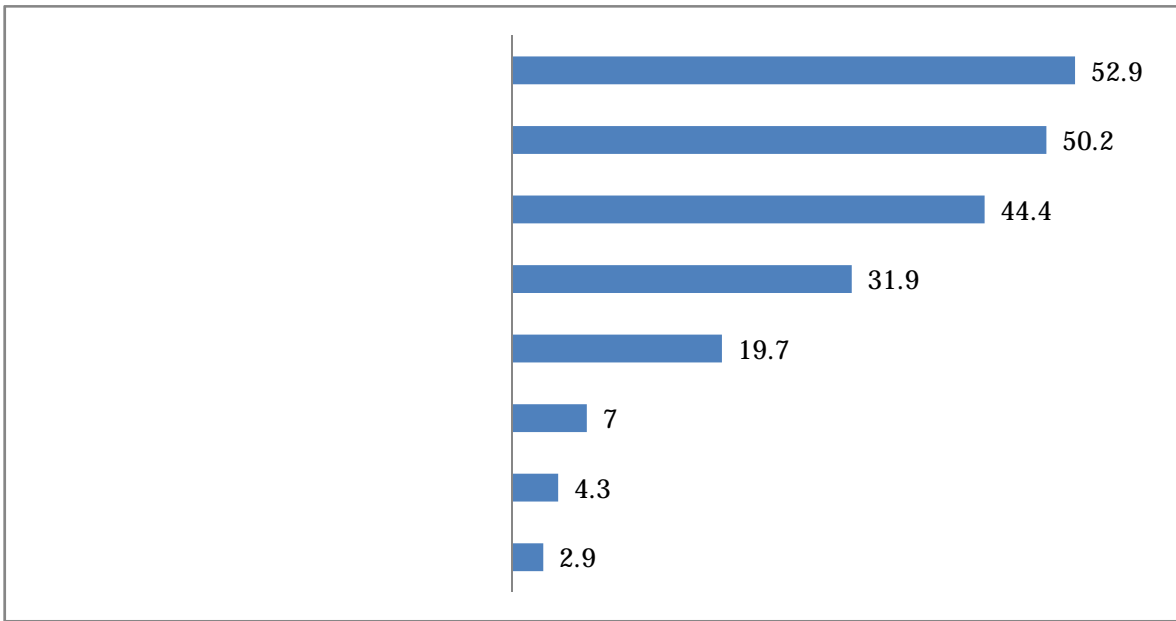
1495

31.9% 50.2% 19.7% 44.4% 52.9

4.3% 2.9% 7

2 1

2 1



(N=1569)

2 2

68

20

(

4

19

13

11

11

72

7

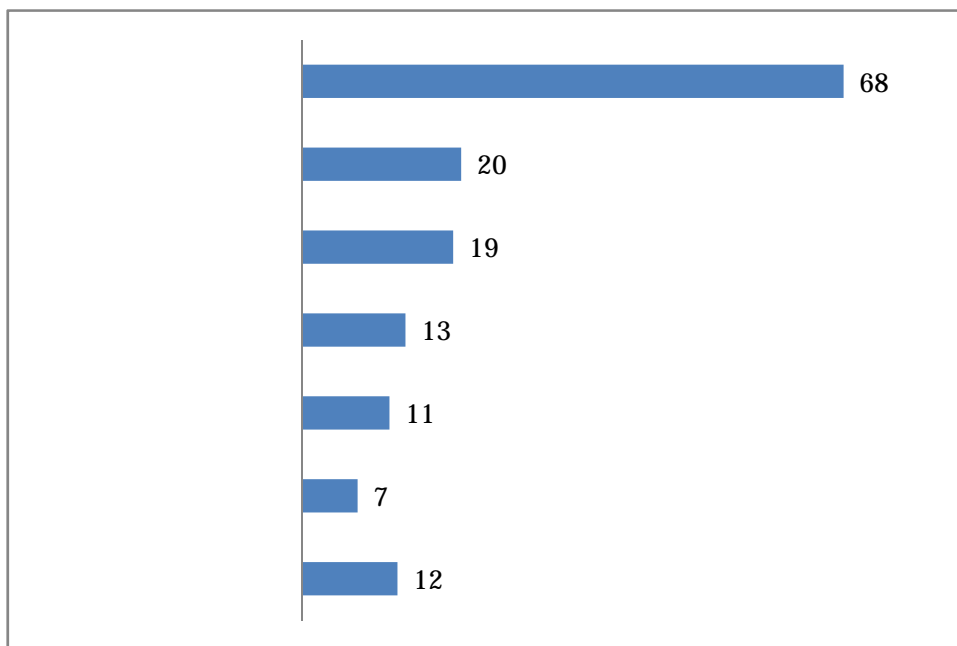
12

S23

40

26

2 2



N=150

2 3

40

59.0

80

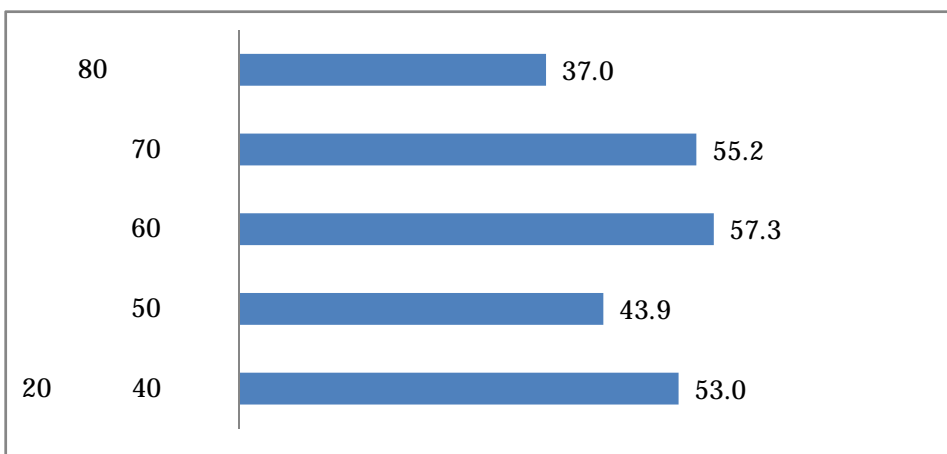
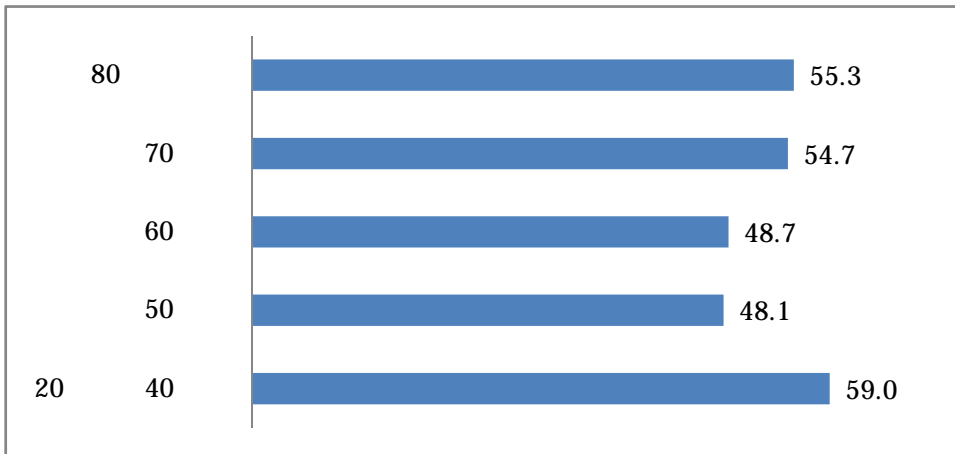
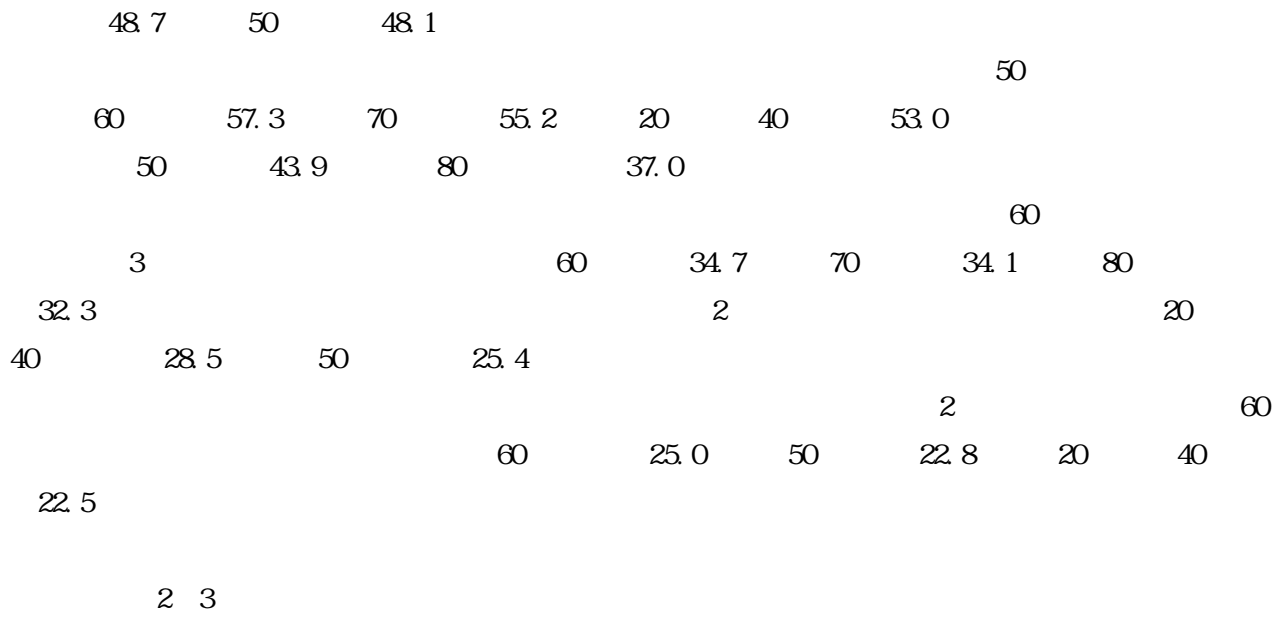
55.3

70

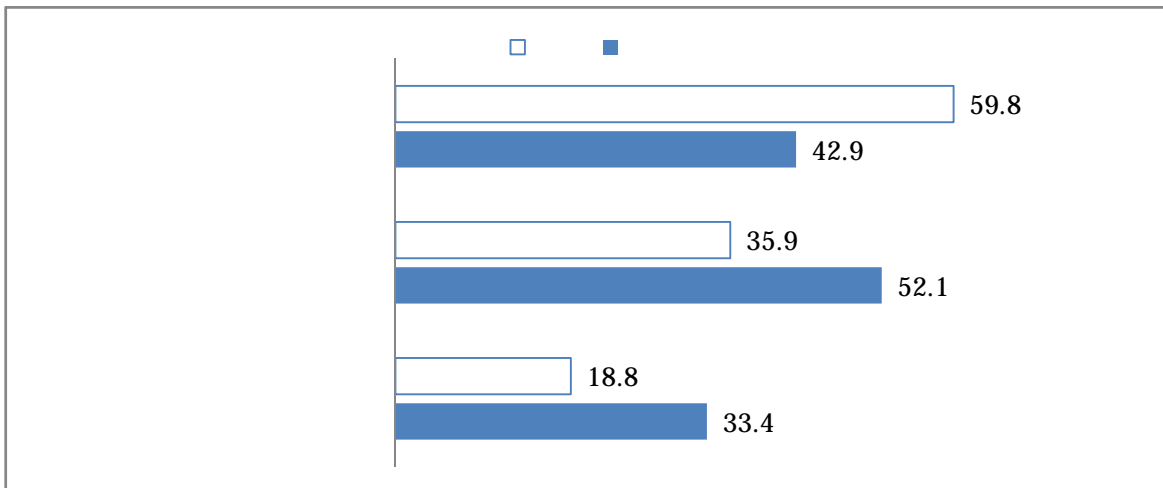
54.7

60

20



2 4



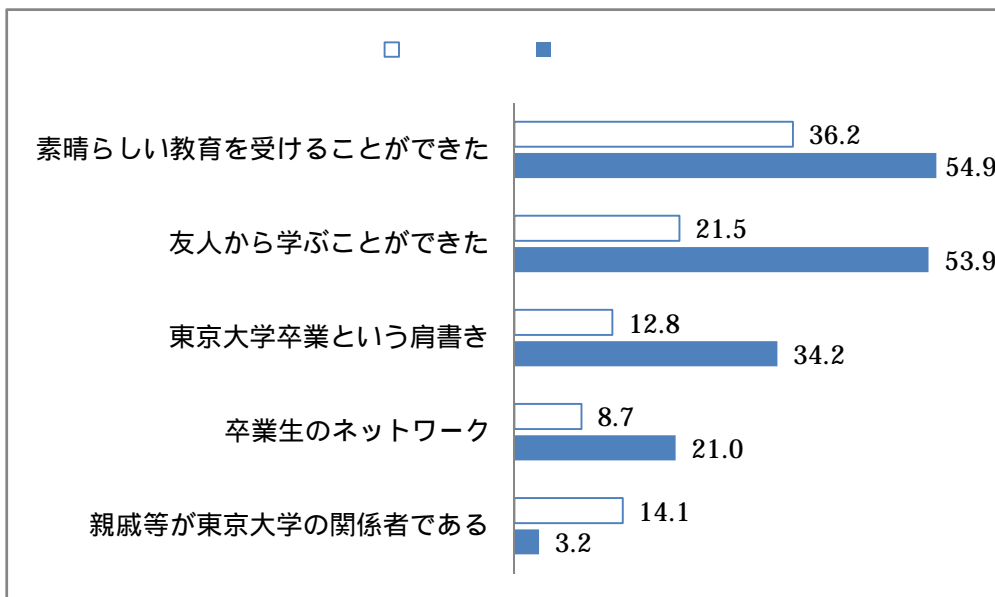
(N=1435)

2 5

3 2

14 1

2 5

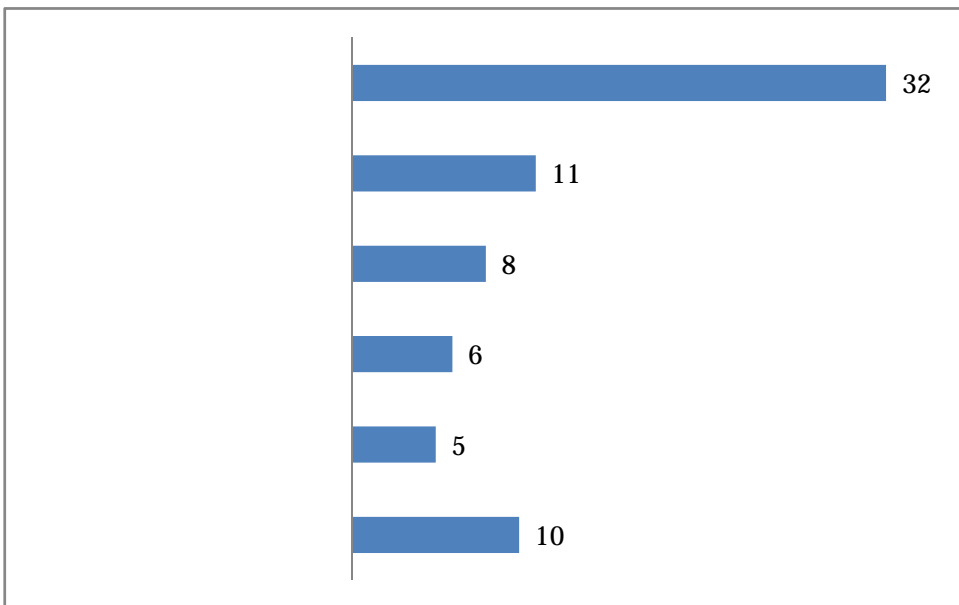


N=1517

8

6

3 2



N=72

3 3

20 40 13 5 60

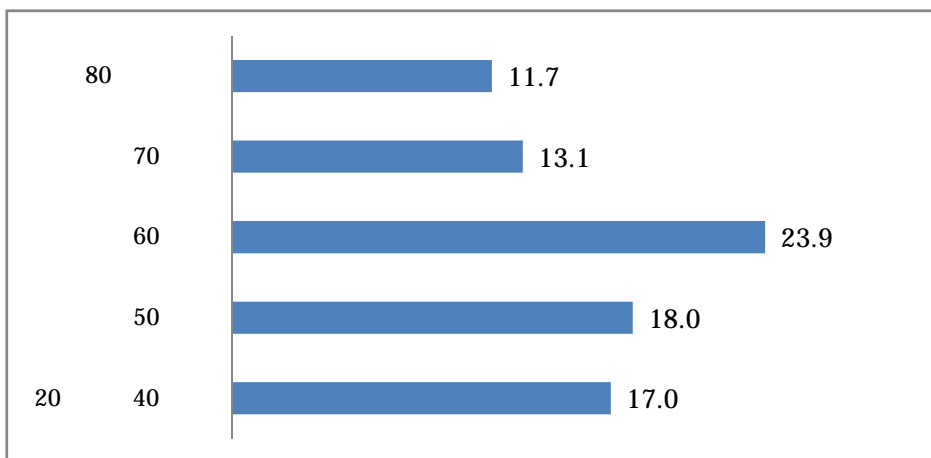
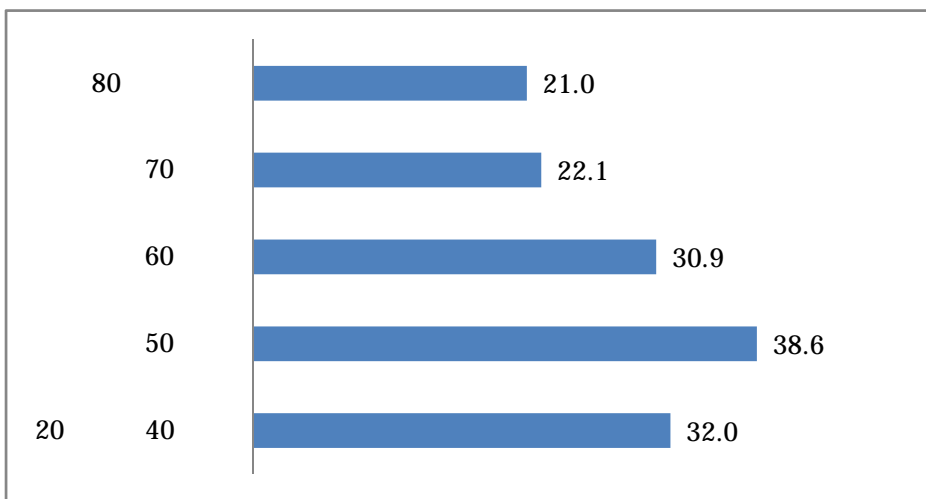
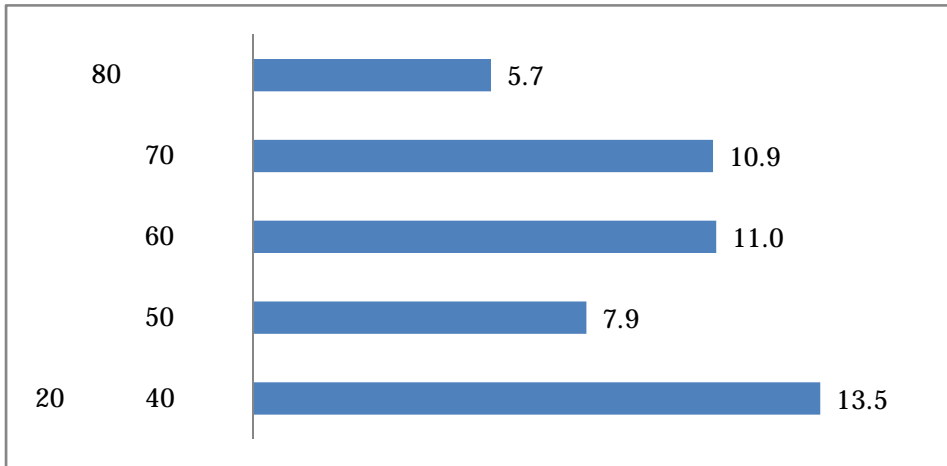
11.0 70 10.9 50 7.9 80 5.7

38.6 20 40 32.0 60 30.9 70 22.1 80

21.0 70 60 23.9 50

18.0 20 40 17.0 70 13.1 80 11.7

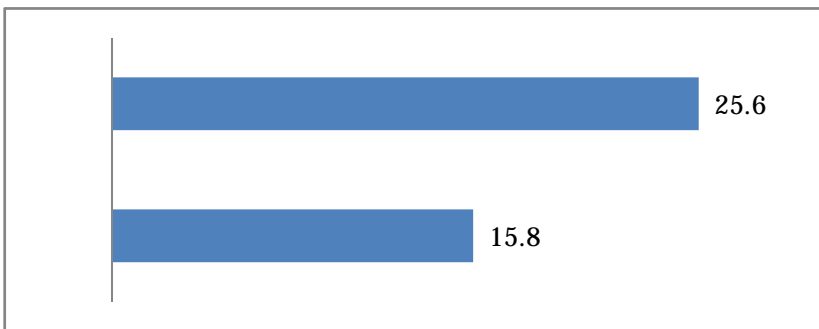
3 3



(N=1536)

15.8
3 4

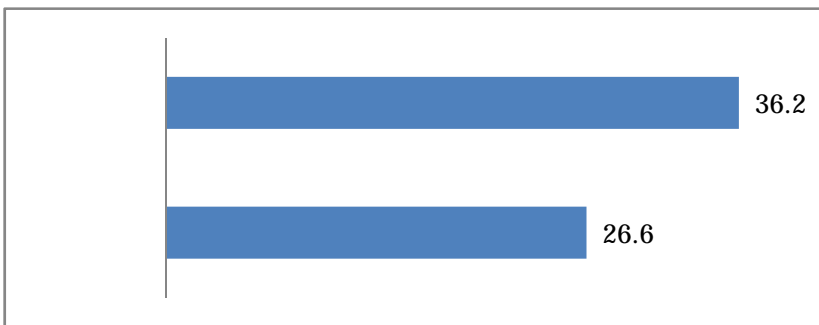
3 4 25.6



(N=1435)

3 5
36.2 26.6

3 5



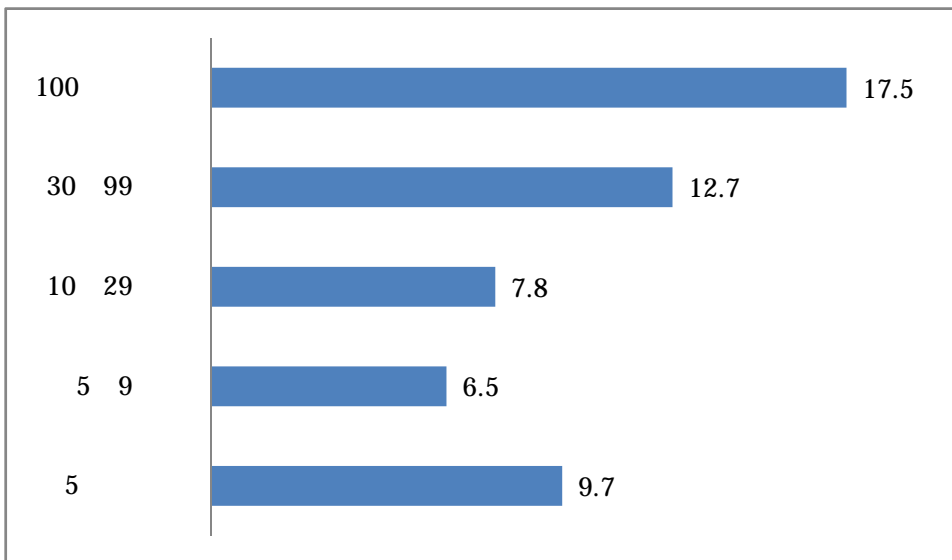
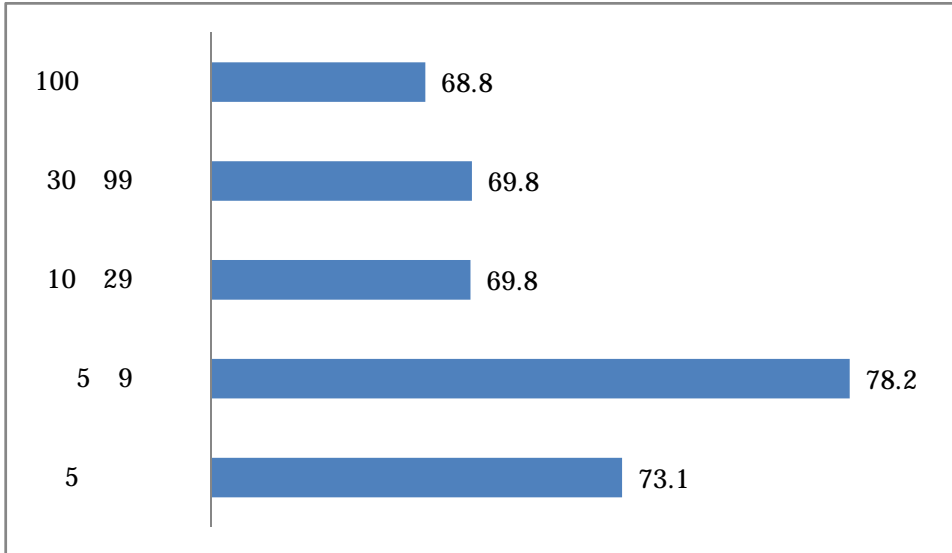
(N=1517)

3 6

29 69.8 30 99 5 9 69.8 100 78.2 68.8 5 17.5 73.1 10 30 99

12.7 5 9.7 10.29 7.8 5.9 6.5

3.6



(N=1495)

46.3
0.9

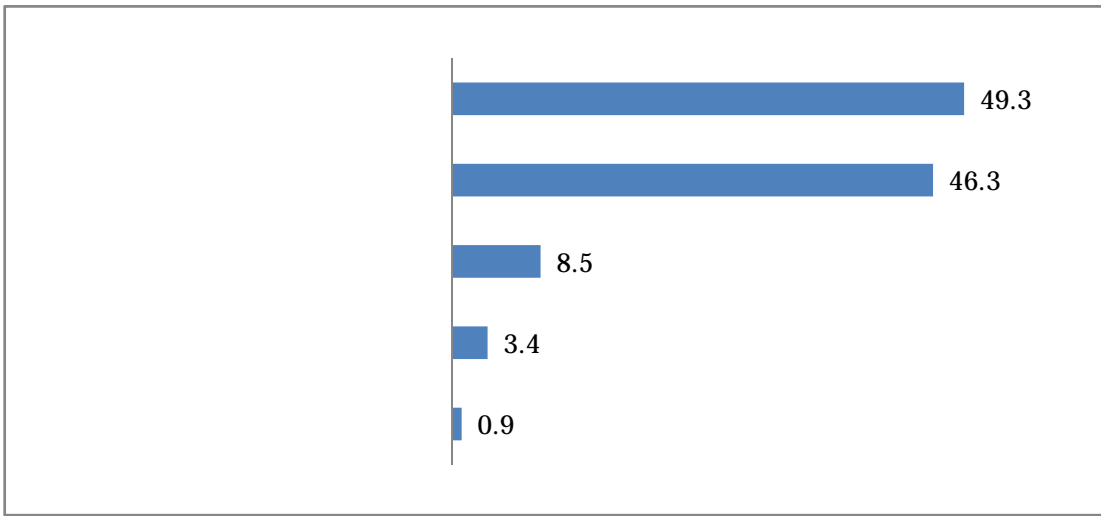
3.7

8.5

49.3

3.4

3 7



(N=1569)

3 8

(
(
13

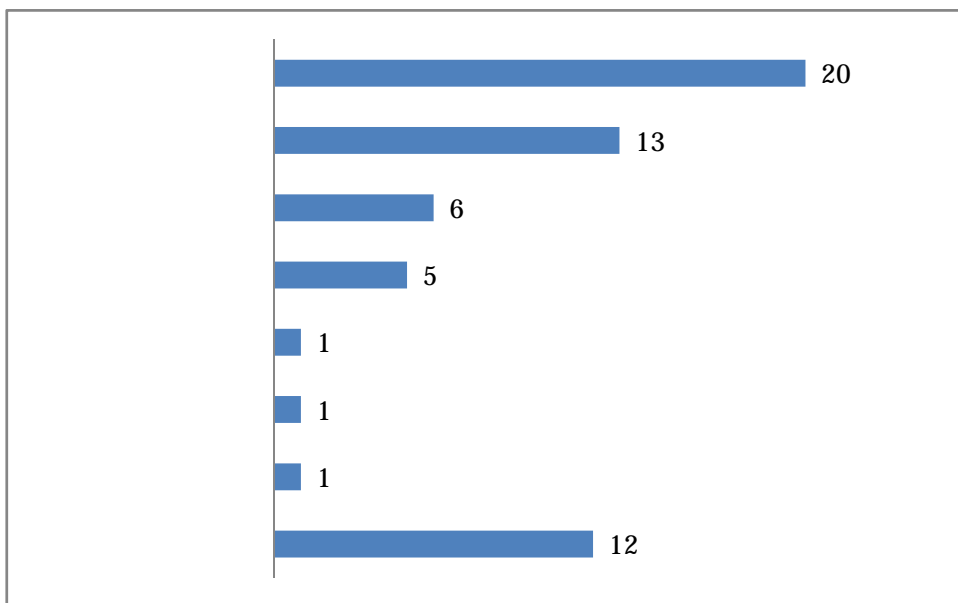
PR

6

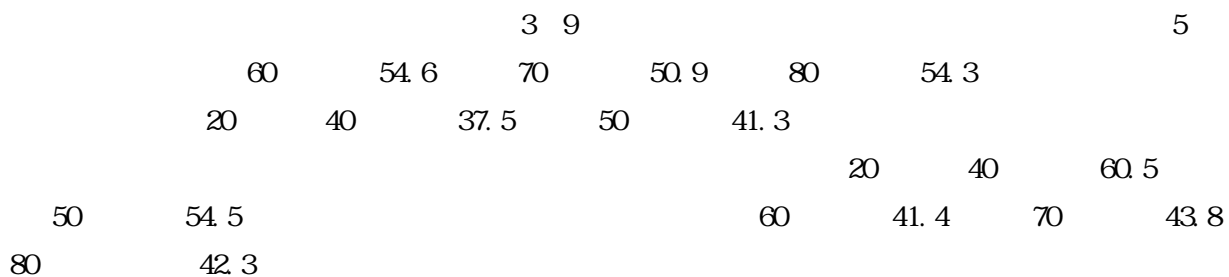
5

12

3 8



N=59

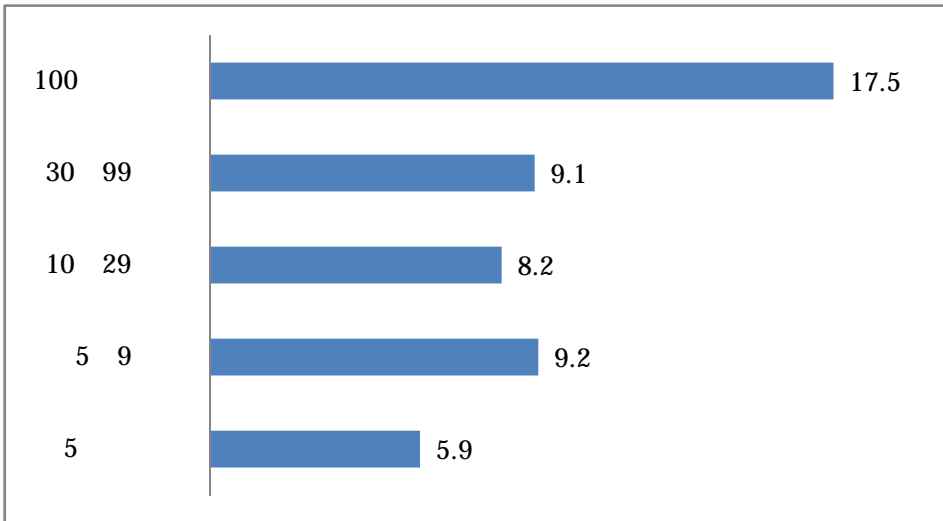
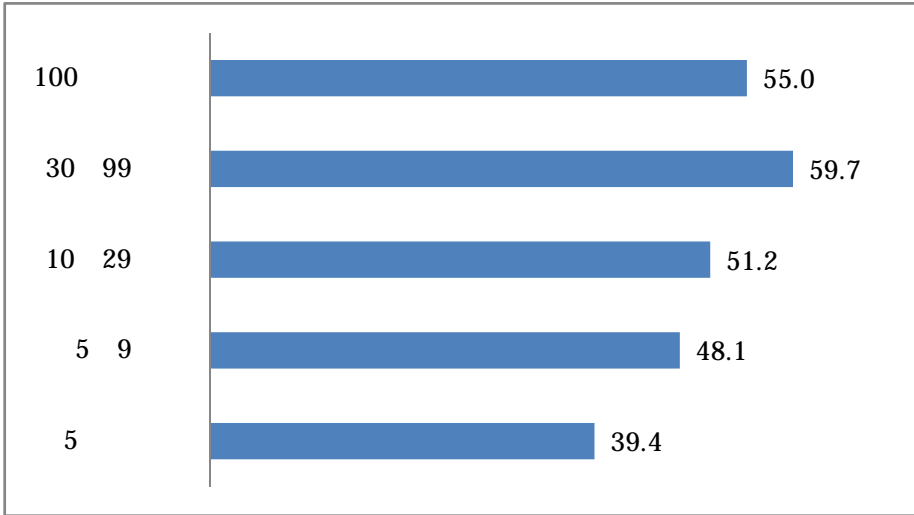


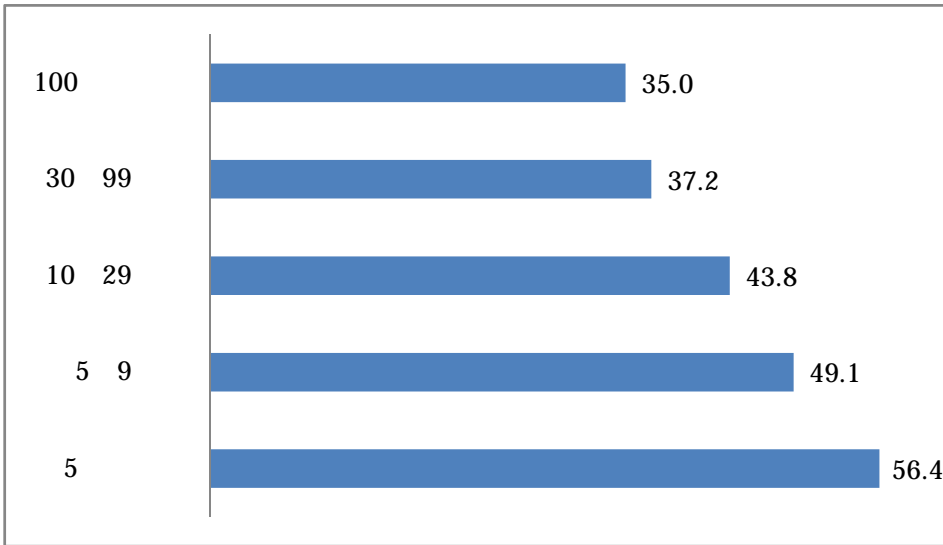
3 9



99 9.1 10 29 5 8.2 5.9 5.9 9.2

3 11





N=1495

1

8.5

17

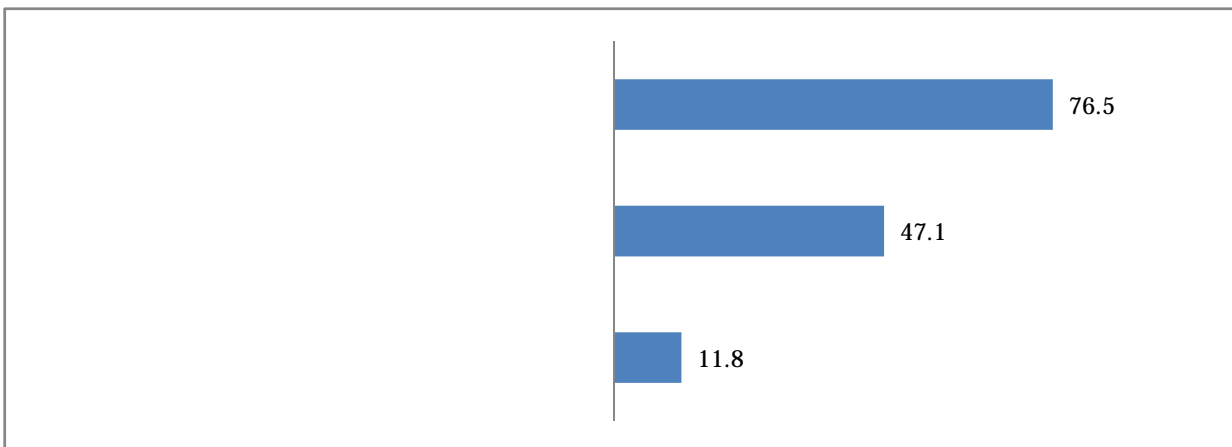
76.5

47.1

11.8

4.1

4.1



N= 17

11

4 2

12

11

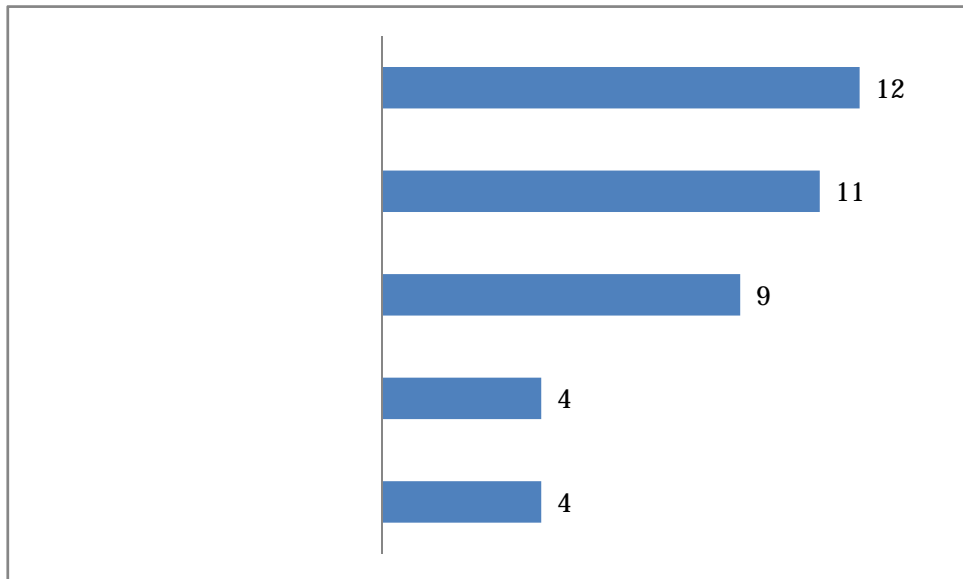
9

4

/

4

4 2



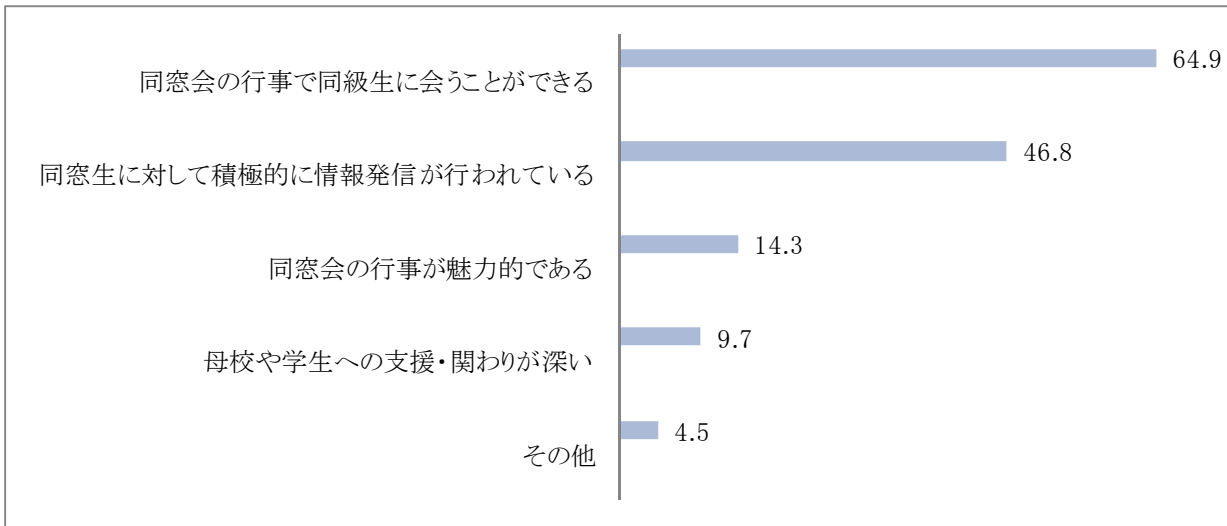
N=40

4 3

33 5

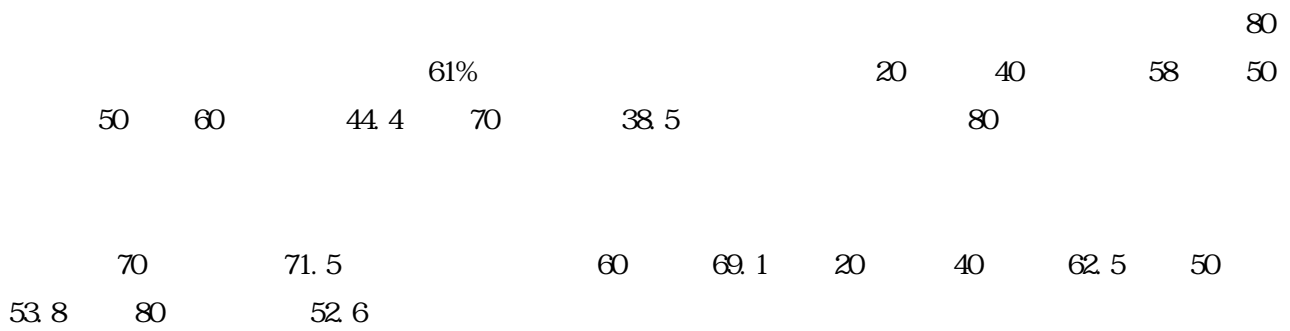
4 5
64.9
14.3
4 5

46.8
9.7
4.5

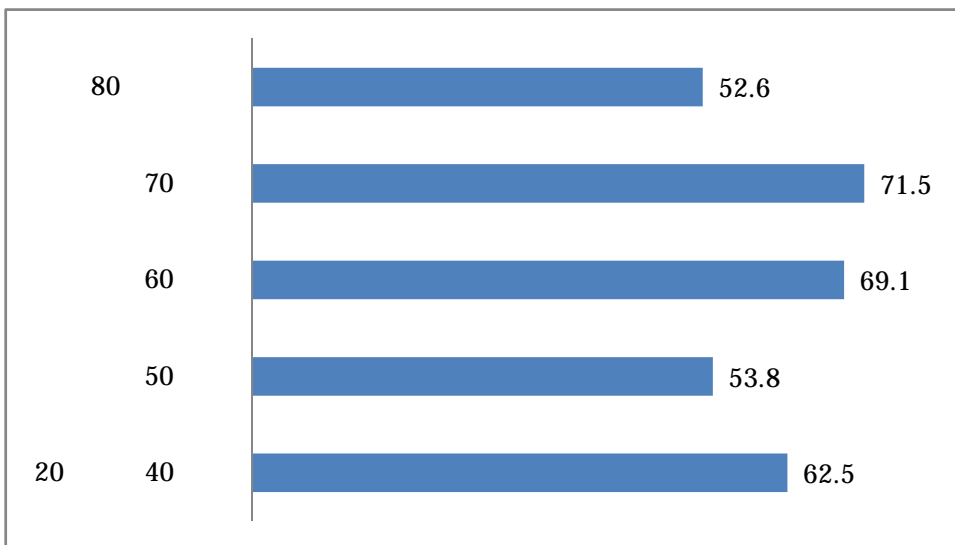
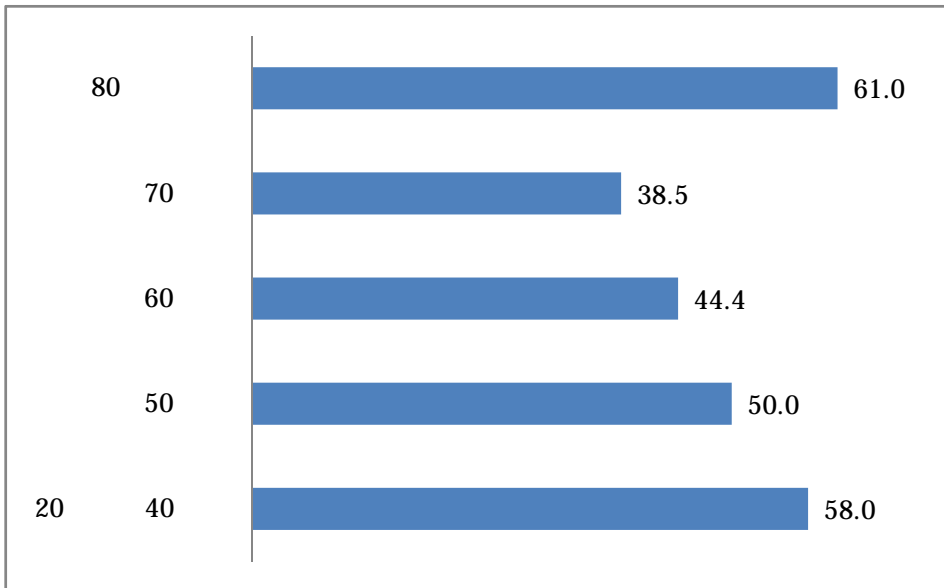


N=936

4 6



4 6



N=1495

4 7

14

hone coming party

11

13

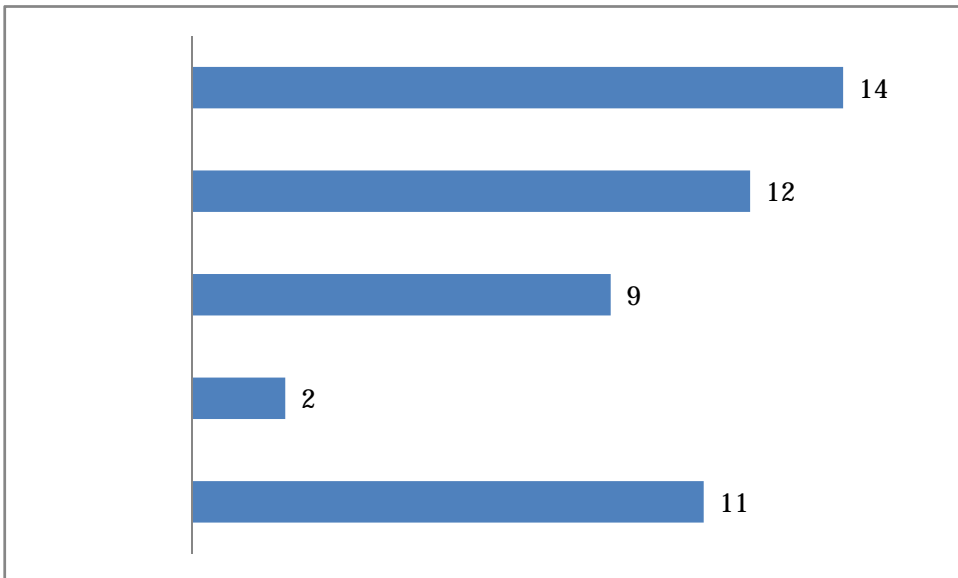
9

24

2

4 7

()



(N= 48)

4 8

35.2

30.2

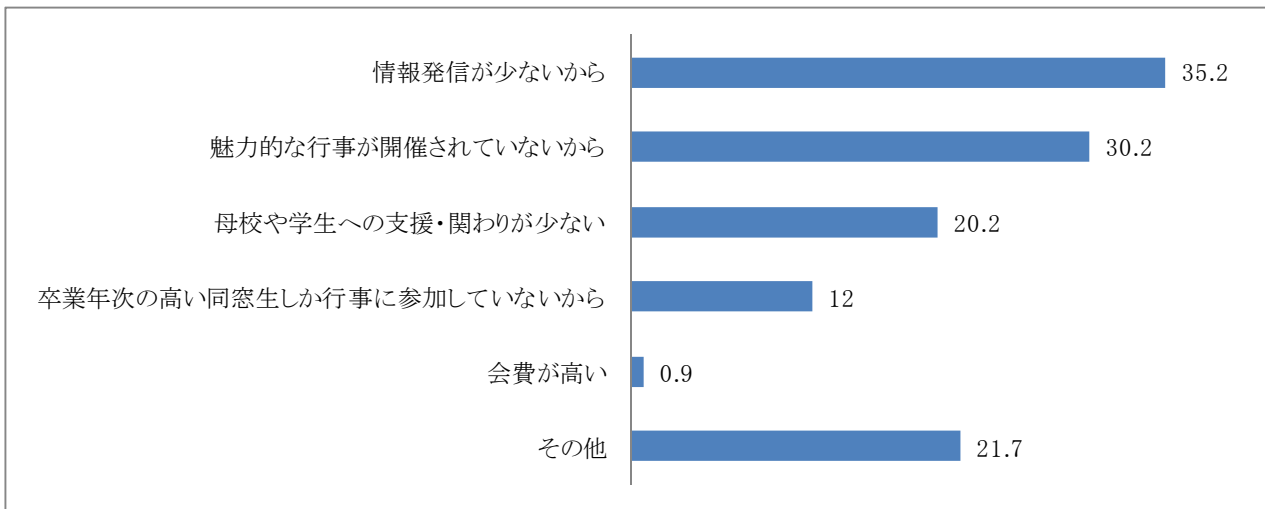
21.7

20.2

12

0.9

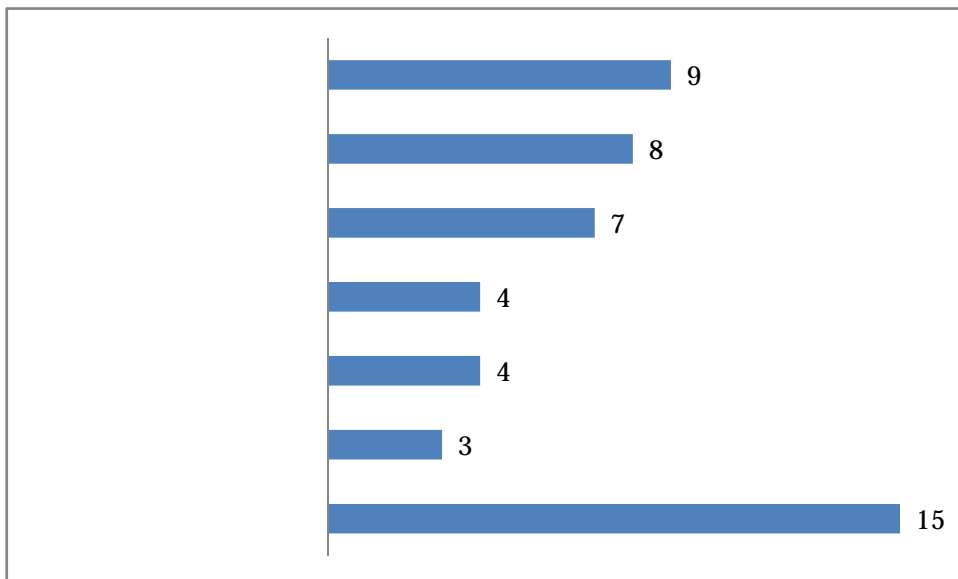
4 8



N=341

4 9

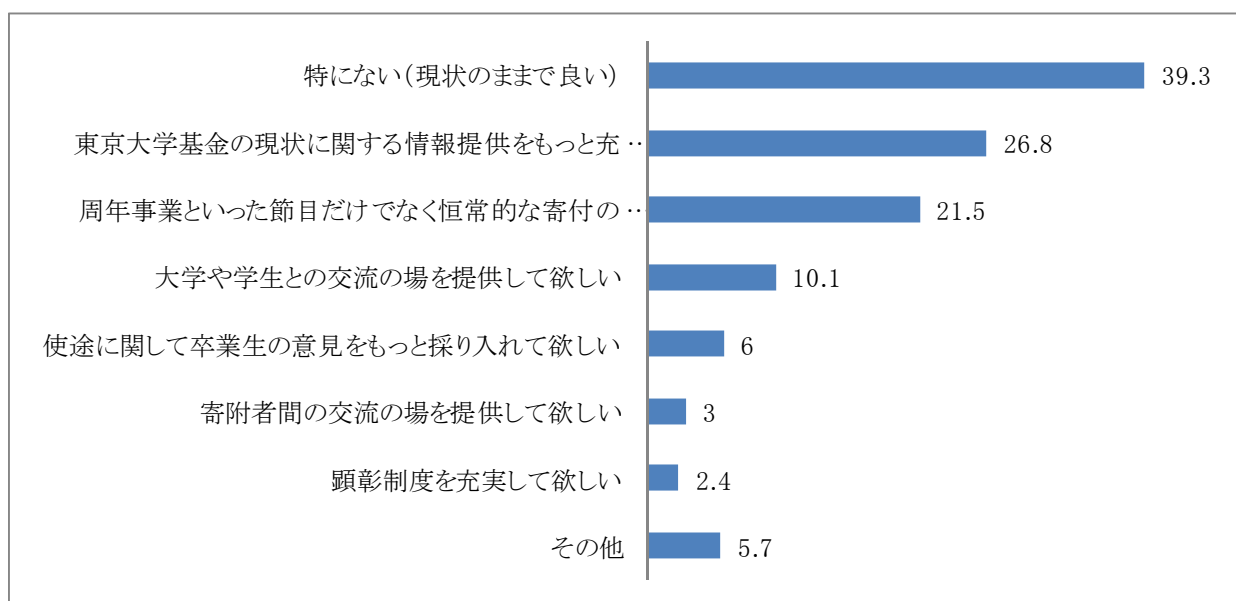
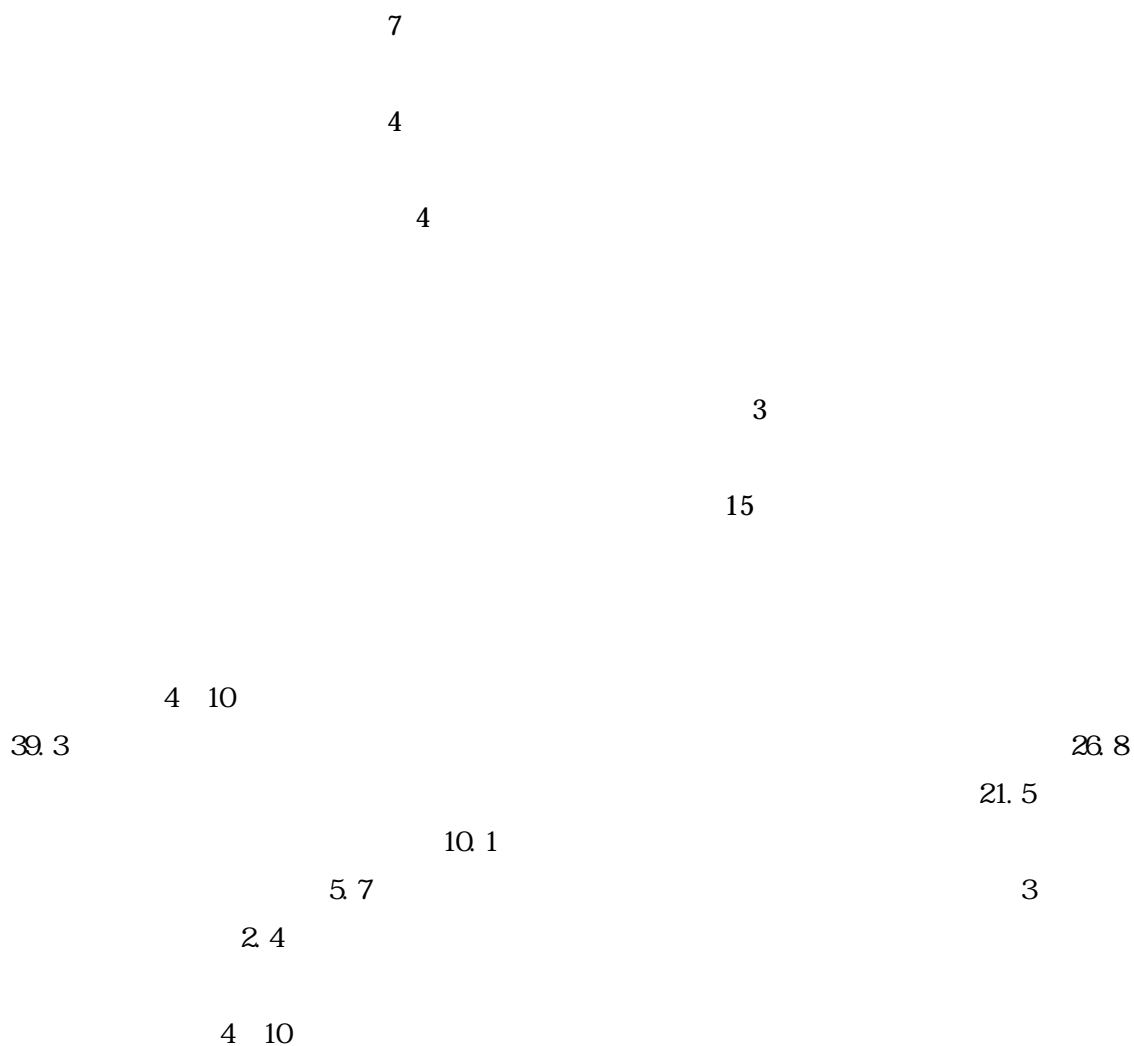
4 9



N= 50

9

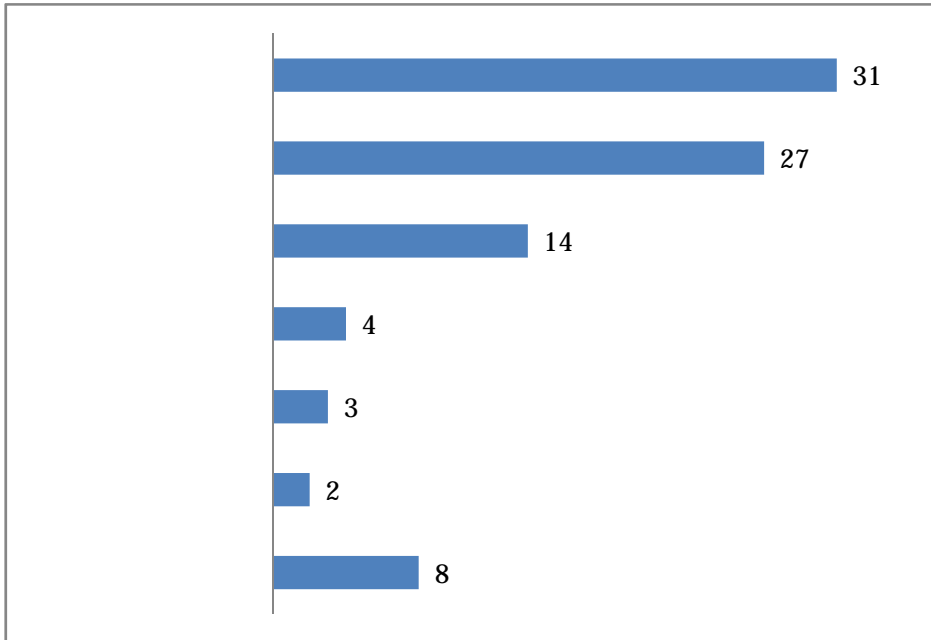
8



N=1569

4 11

4 11



N=89

31

27

14

B5

TEL

4

36

CBCG

3

2

8

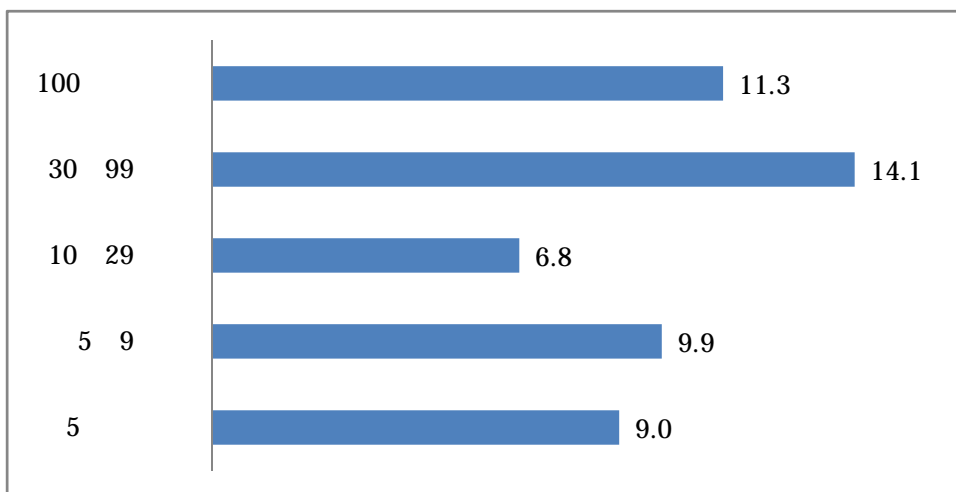
4 12

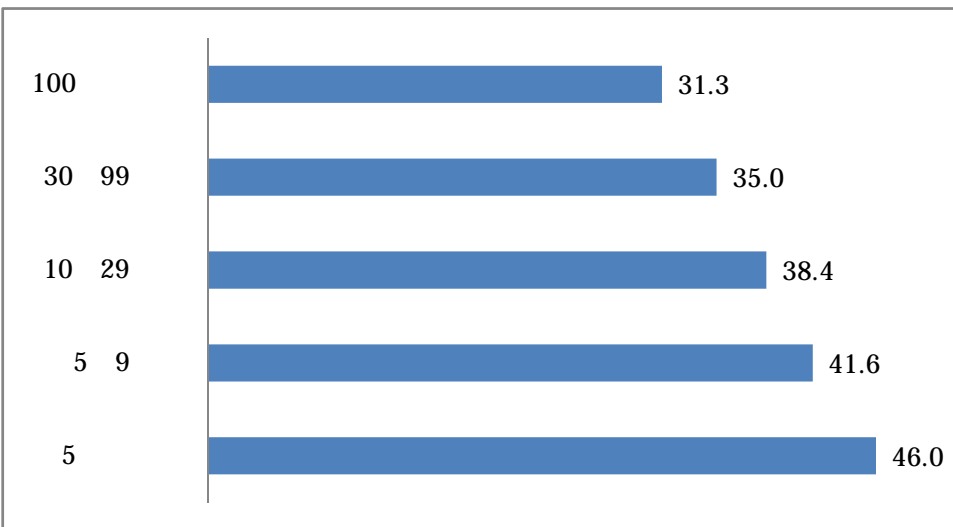
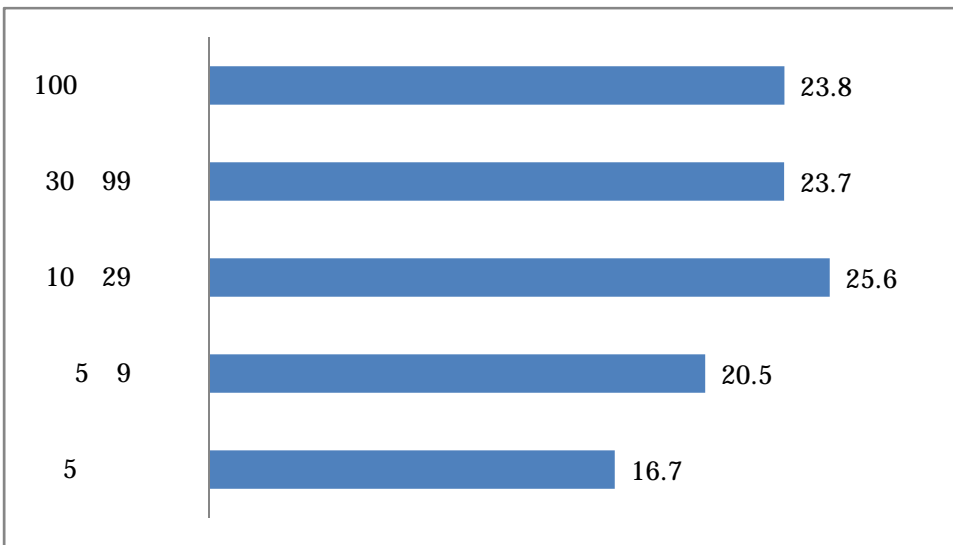
30

99	14.1		100	11.3	5.9	9.9	5	9.0	10
29	6.8			30					

		10.29	25.6		100	23.8	30.99	23.7
5.9	20.5	5	16.7					
							5	46.0
5.9	41.6	10.29	38.4	30.99	35.0	100		31.3

4 12





N=1495

5

1

5 1

0

49.9%

1 28.9

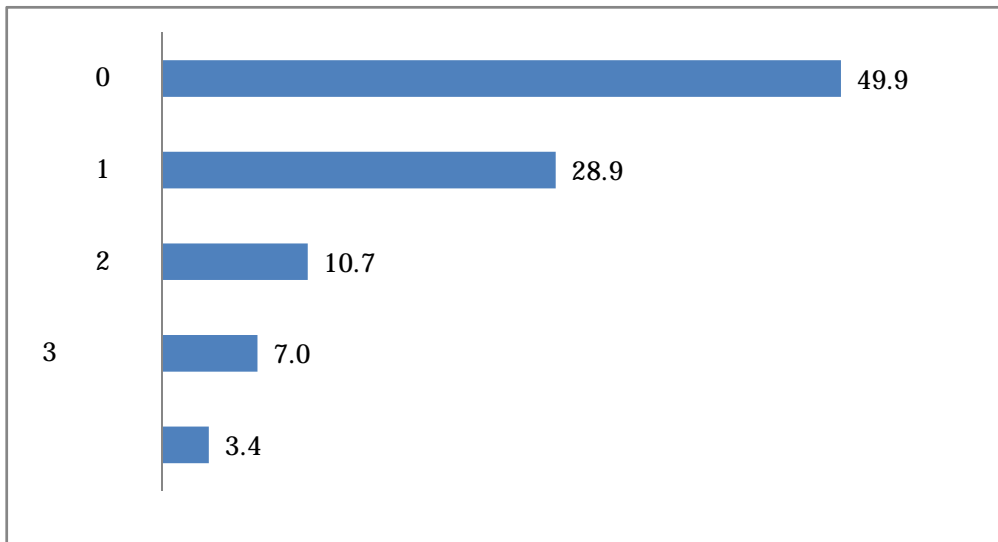
2 10.7

3

7.0

3.4

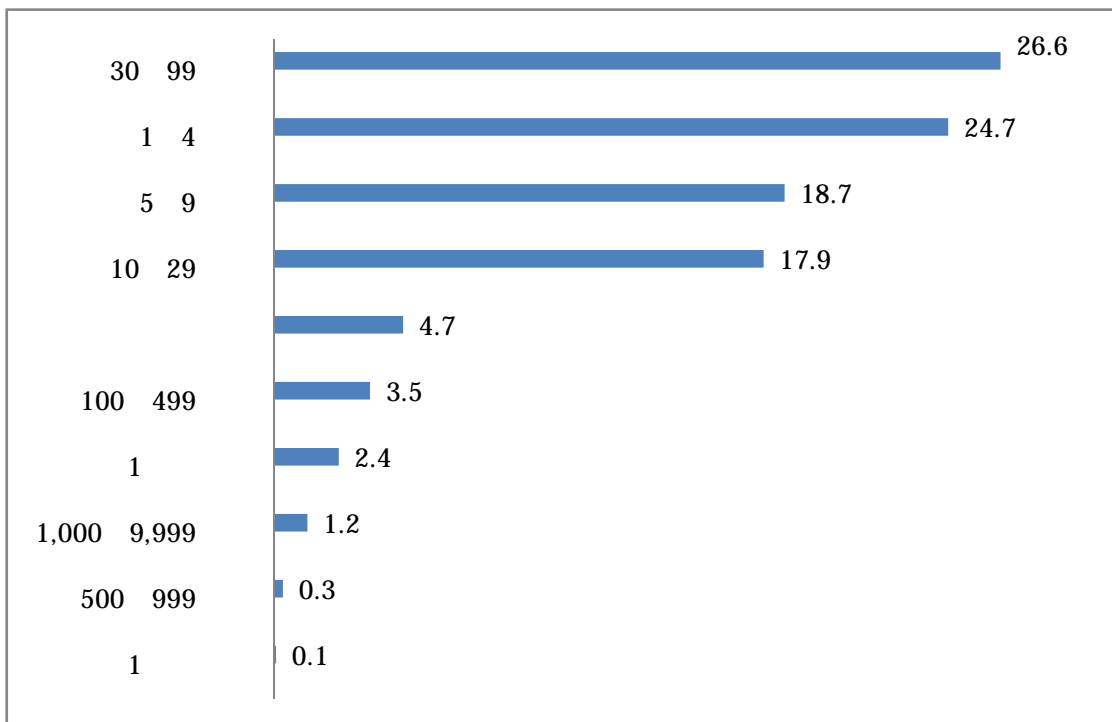
5 1



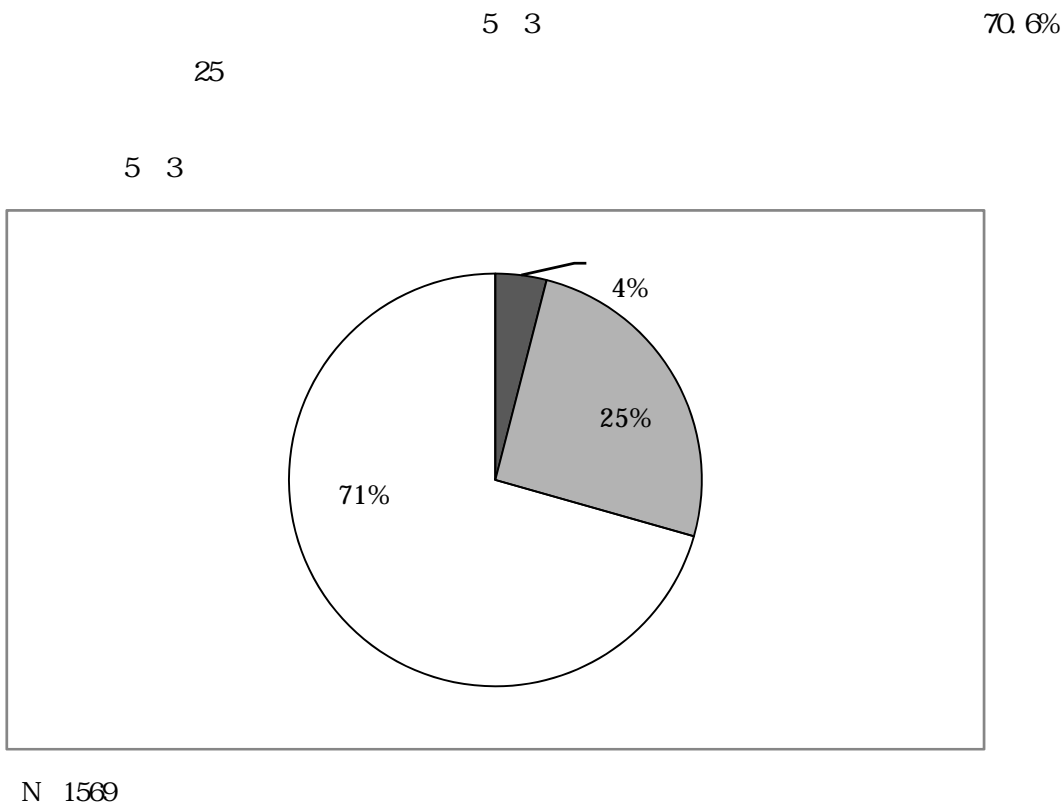
N 1569

Category	Percentage
1 4	24.7
2 4	1.000
5 9	18.7
1.2	500
30 99	10.29
17.9	0.3
100 499	1
26.6	0.1
3.5	1

5 2



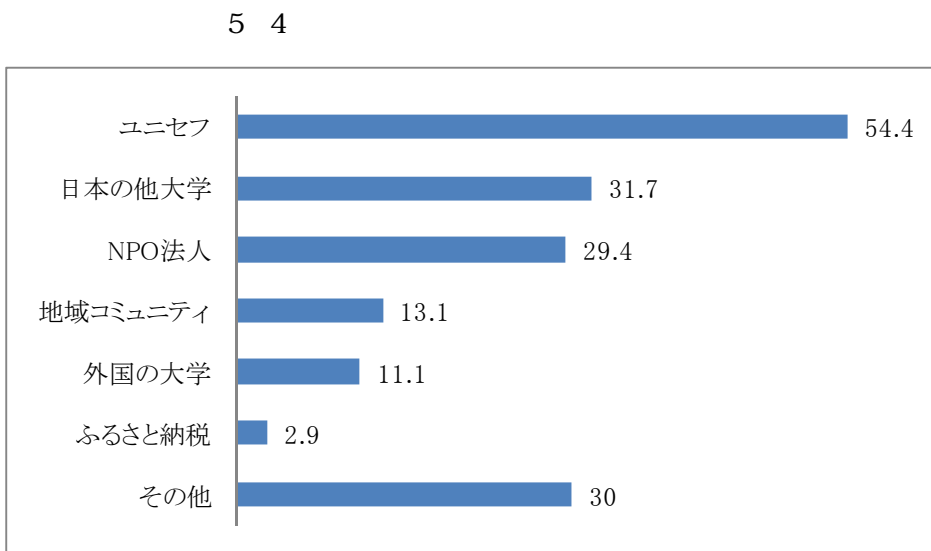
N 1569



5 4 30%

54.4% 31.7%

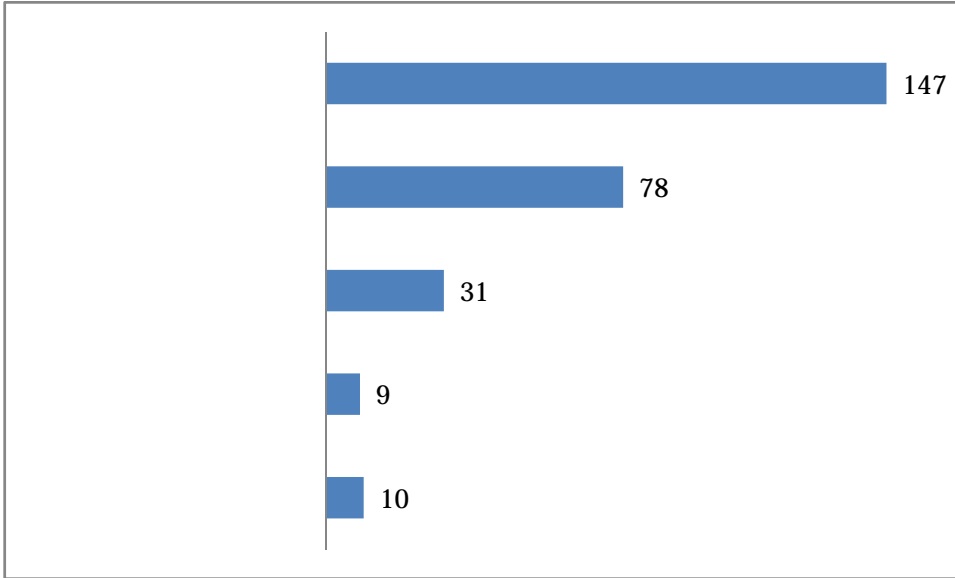
NPO 29.4%



=1107

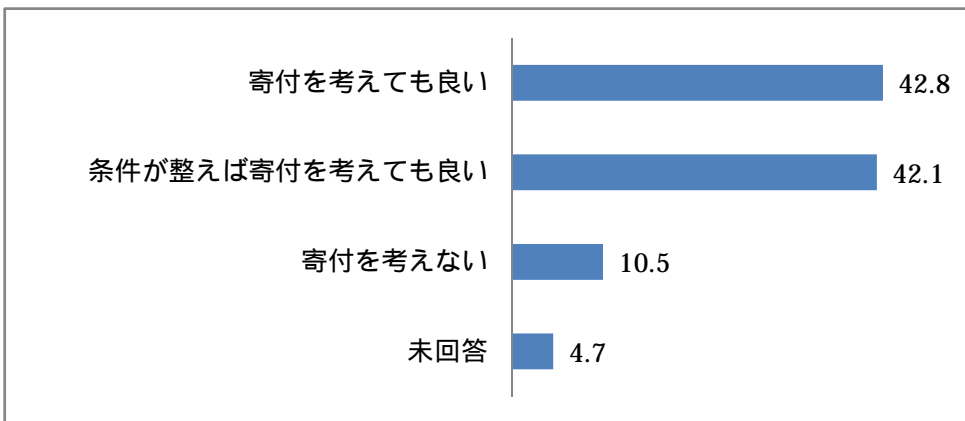
78 31 9 5 5 147

5 5



N=275

5 6



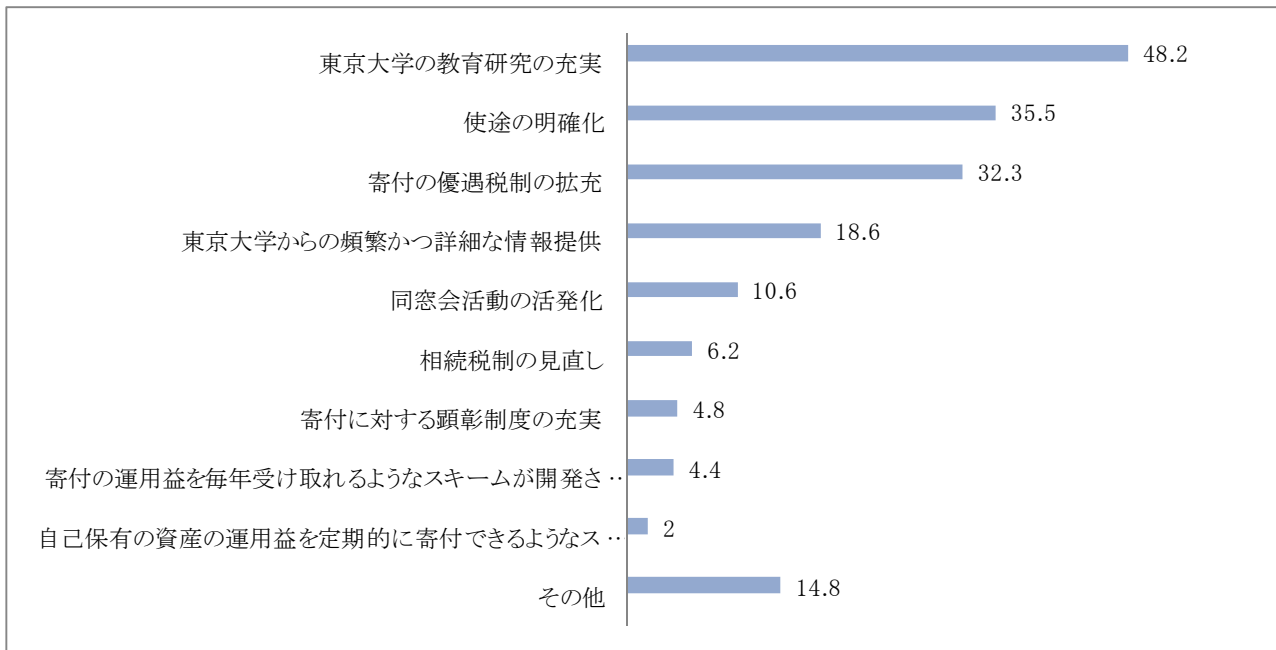
N=1569

5 6

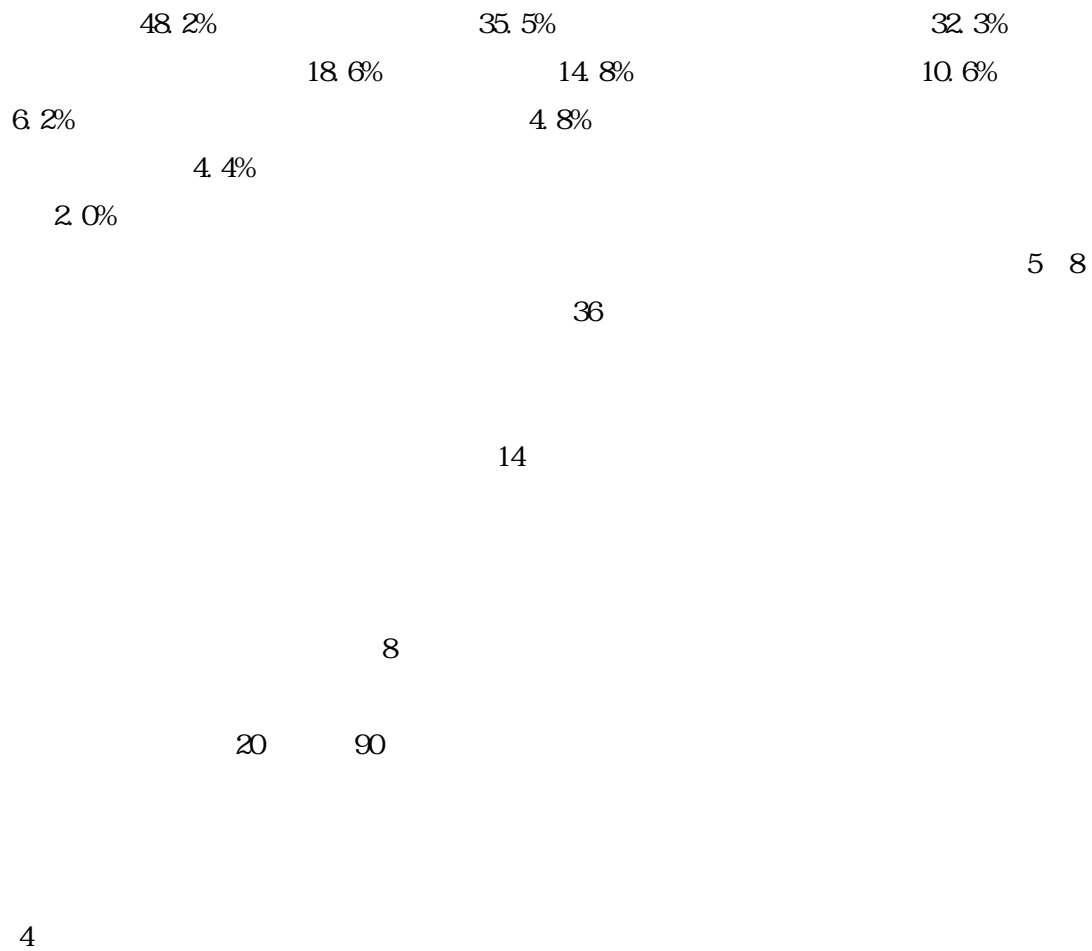
42.8% 42.1%

10.5%

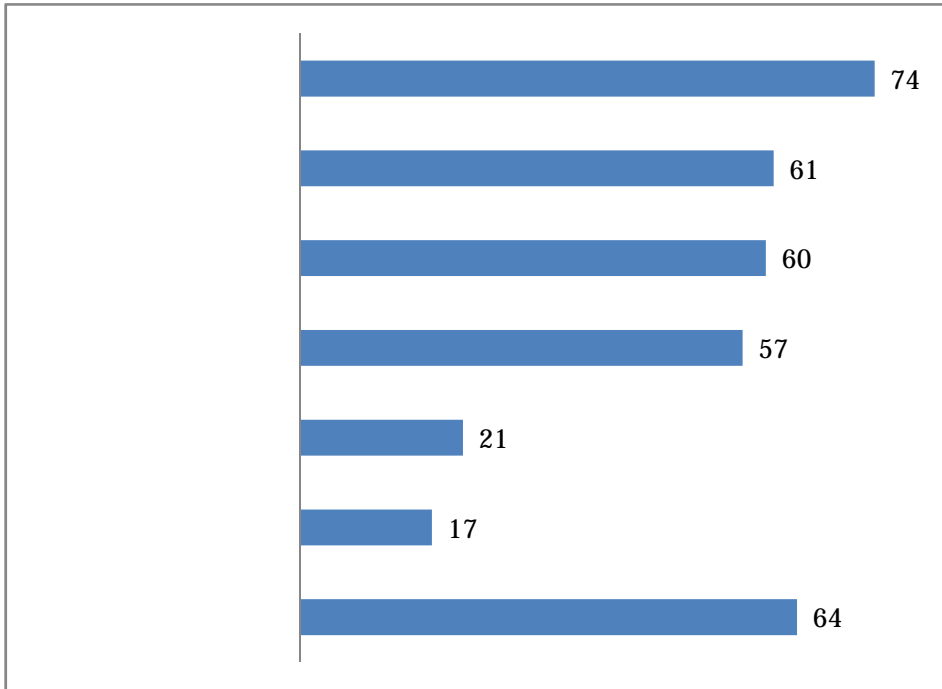
5 7



N=660



6 1



N=354

74

etc

61

MT

60

Nb1 school

Lead

Academy

Support

57

21

PR

17

100

64

	2008	10
4,104	1,569	38.2%
70	60	23.7%
82%	30.99	26.6%
18.7%	1.4	17.7%
		24.7%
		5.9
	58.7%	58.8%
	“ ” “ ”	
	35.8%	22.0%
	21.9%	
	16.4%	
“ ”		52.9%
	50.2%	44.4%
	31.9%	19.7%
	72.0%	29.4%
27.0%	66.3%	
	16.4%	
		49.3%
		33.5%
	11.7%	11.2%
18.7		
		60.0%
		22.0%



I.

1	
a	2
b	2
c	2
d	2
e	1-1
f	1-1
g	2
h	2
i	2
j	2
k	2

1-1 1 e f.

a	
b	
c	

2	
a	
b	
c	
d	
e	
f	
g	
h	

3

a		e	
b		f	
c		g	
d		h	
i			

4

a	
b	
c	
d	
e	

II.

5

5 6

1	
2	
3	
4	
5	
6	
7	

6

1	6-1	2	6-2
---	-----	---	-----

6-1 6 1.

a	
b	
c	
d	
e	

6-2 6 2.

a	
b	
c	
d	
e	
f	

7

a	
b	
c	
d	
e	
f	
g	
h	

III.

8

1	0	2	1	3	2	4	3
---	---	---	---	---	---	---	---

9

1	9-1	2	10
---	-----	---	----

9-1 9 1.

a		d	
b		e	
c		f	NPO
g			

10

1	10-1
2	10-2
3	11

